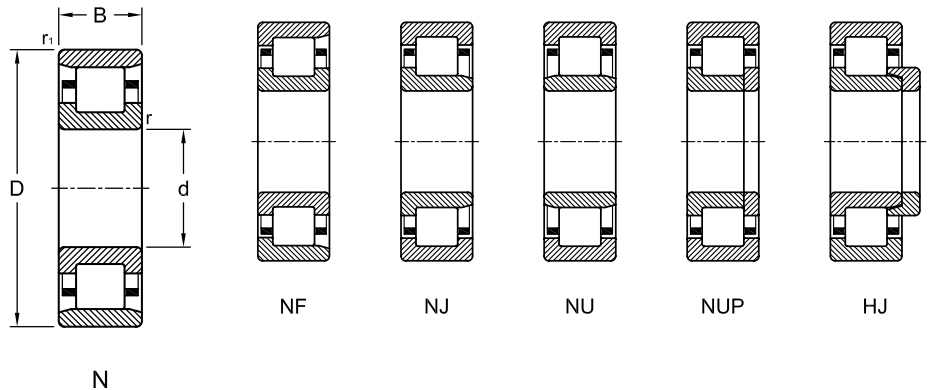


Cylindrical Roller Bearings

Single Row
Metric Series

N, NF, NJ, NU, NUP



Dimensions				Load Rating			AEC Bearing	M	Angle Ring
mm				kN					
d	D	B	r ₁	r	Dynamic (C)	Static (C ₀)			
15	35	11	0.6	0.3	9.8	7.8	N 202		
	35	11	0.6	0.3	12.5	10.2	N 202 E		
	35	11	0.6	0.3	9.8	7.8	NF 202		
	35	11	0.6	0.3	12.5	10.2	NF 202 E		
	35	11	0.6	0.3	9.8	7.8	NJ 202		
	35	11	0.6	0.3	12.5	10.2	NJ 202 E	•	
	35	11	0.6	0.3	9.8	7.8	NU 202		
	35	11	0.6	0.3	12.5	10.2	NU 202 E	•	
	42	13	1	0.6	14.2	10.7	N 302		
	42	13	1	0.6	19.4	15.3	N 302 E		
	42	13	1	0.6	14.2	10.7	NF 302		
	42	13	1	0.6	19.4	15.3	NF 302 E		
	42	13	1	0.6	14.2	10.7	NJ 302		
	42	13	1	0.6	19.4	15.3	NJ 302 E	•	
	42	13	1	0.6	14.2	10.7	NU 302		
	42	13	1	0.6	19.4	15.3	NU 302 E	•	
17	40	12	0.6	0.3	11.4	8.6	N 203		
	40	12	0.6	0.3	17.2	14.3	N 203 E		
	40	12	0.6	0.3	11.4	8.6	NF 203		
	40	12	0.6	0.3	17.2	14.3	NF 203 E		
	40	12	0.6	0.3	11.4	8.6	NJ 203		
	40	12	0.6	0.3	17.2	14.3	NJ 203 E	•	
	40	12	0.6	0.3	11.4	8.6	NU 203		
	40	12	0.6	0.3	17.2	14.3	NU 203 E	•	
	40	12	0.6	0.3	11.4	8.6	NUP 203		
	40	12	0.6	0.3	17.2	14.3	NUP 203 E		
	40	16	0.6	0.3	15.4	13.0	NJ 2203		
	40	16	0.6	0.3	23.8	21.6	NJ 2203 E	•	
	40	16	0.6	0.3	15.4	13.0	NU 2203		
	40	16	0.6	0.3	23.8	21.6	NU 2203 E	•	

Dimensions					Load Rating		AEC Bearing	M	Angle Ring
mm					kN				
d	D	B	r ₁	r	Dynamic (C)	Static (C ₀)			
	40	16	0.6	0.3	15.4	13.0	NUP 2203		
	40	16	0.6	0.3	23.8	21.6	NUP 2203 E		
	47	14	1	0.6	18.8	14.8	N 303		
	47	14	1	0.6	24.6	20.4	N 303 E		
	47	14	1	0.6	18.8	14.8	NF 303		
	47	14	1	0.6	24.6	20.4	NF 303 E		
	47	14	1	0.6	18.8	14.8	NJ 303		
	47	14	1	0.6	24.6	20.4	NJ 303 E	•	•
	47	14	1	0.6	18.8	14.8	NU 303		
	47	14	1	0.6	24.6	20.4	NU 303 E	•	•
	47	14	1	0.6	18.8	14.8	NUP 303		
	47	14	1	0.6	24.6	20.4	NUP 303 E	•	
20	47	14	1	0.6	15.5	12.0	N 204		
	47	14	1	0.6	25.1	22.0	N 204 E		
	47	14	1	0.6	15.5	12.0	NF 204		
	47	14	1	0.6	25.1	22.0	NF 204 E		
	47	14	1	0.6	15.5	12.0	NJ 204	•	
	47	14	1	0.6	25.1	22.0	NJ 204 E		•
	47	14	1	0.6	15.5	12.0	NU 204	•	
	47	14	1	0.6	25.1	22.0	NU 204 E		•
	47	14	1	0.6	15.5	12.0	NUP 204	•	
	47	14	1	0.6	25.1	22.0	NUP 204 E		
	47	18	1	0.6	21.0	17.8	NJ 2204		
	47	18	1	0.6	29.7	27.5	NJ 2204 E		•
	47	18	1	0.6	21.0	17.8	NU 2204		
	47	18	1	0.6	29.7	27.5	NU 2204 E		•
	47	18	1	0.6	21.0	17.8	NUP 2204		
	47	18	1	0.6	29.7	27.5	NUP 2204 E		
	52	15	1	0.6	21.7	16.6	N 304		
	52	15	1	0.6	30.8	26.0	N 304 E		
	52	15	1.1	0.6	21.7	16.6	NF 304		
	52	15	1.1	0.6	30.8	26.0	NF 304 E		
	52	15	1.1	0.6	21.7	16.6	NJ 304	•	
	52	15	1.1	0.6	30.8	26.0	NJ 304 E	•	
	52	15	1.1	0.6	21.7	16.6	NU 304	•	
	52	15	1.1	0.6	30.8	26.0	NU 304 E	•	
	52	15	1.1	0.6	21.7	16.6	NUP 304		
	52	15	1.1	0.6	30.8	26.0	NUP 304 E		
	52	21	1.1	0.6	31.2	26.5	NJ 2304	•	
	52	21	1.1	0.6	41.3	38.0	NJ 2304 E	•	
	52	21	1.1	0.6	31.2	26.5	NU 2304	•	
	52	21	1.1	0.6	41.3	38.0	NU 2304 E	•	
	52	21	1.1	0.6	31.2	26.5	NUP 2304		
	52	21	1.1	0.6	41.3	38.0	NUP 2304 E		
25	47	12	0.6	0.3	14.2	13.2	N 1005		
	47	12	0.6	0.3	14.2	13.2	NJ 1005		

Dimensions				Load Rating		AEC Bearing	M	Angle Ring
mm				kN				
d	D	B	r ₁	r	Dynamic (C)	Static (C ₀)		
	47	12	0.6	0.3	14.2	13.2		NU 1005
	47	12	0.6	0.3	14.2	13.2		NUP 1005
	52	15	1	0.6	17.7	14.8		N 205
	52	15	1	0.6	28.6	27.0		N 205 E
	52	15	1	0.6	17.7	14.8		NF 205
	52	15	1	0.6	28.6	27.0		NF 205 E
	52	15	1	0.6	17.7	14.8		NJ 205
	52	15	1	0.6	28.6	27.0	•	NJ 205 E
	52	15	1	0.6	17.7	14.8		NU 205
	52	15	1	0.6	28.6	27.0	•	NU 205 E
	52	15	1	0.6	17.7	14.8		NUP 205
	52	15	1	0.6	28.6	27.0		NUP 205 E
	52	18	1	0.6	24.1	22.0	•	NJ 2205
	52	18	1	0.6	34.1	34.0		NJ 2205 E
	52	18	1	0.6	24.1	22.0		NU 2205
	52	18	1	0.6	34.1	34.0		NU 2205 E
	52	18	1	0.6	24.1	22.0		NUP 2205
	52	18	1	0.6	34.1	34.0		NUP 2205 E
	62	17	1.1	1.1	29.8	24.3		N 305
	62	17	1.1	1.1	40.2	36.5		N 305 E
	62	17	1.1	1.1	29.8	24.3		NF 305
	62	17	1.1	1.1	40.2	36.5		NF 305 E
	62	17	1.1	1.1	29.8	24.3	•	NJ 305
	62	17	1.1	1.1	40.2	36.5		NJ 305 E
	62	17	1.1	1.1	29.8	24.3	•	NU 305
	62	17	1.1	1.1	40.2	36.5		NU 305 E
	62	17	1.1	1.1	29.8	24.3	•	NUP 305
	62	17	1.1	1.1	40.2	36.5		NUP 305 E
	62	24	1.1	1.1	43.9	40.0		NJ 2305
	62	24	1.1	1.1	56.1	55.0		NJ 2305 E
	62	24	1.1	1.1	43.9	40.0		NU 2305
	62	24	1.1	1.1	56.1	55.0		NU 2305 E
	62	24	1.1	1.1	43.9	40.0		NUP 2305
	62	24	1.1	1.1	56.1	55.0		NUP 2305 E
	80	21	1.5	1.5	47.1	38.1		N 405
	80	21	1.5	1.5	47.1	38.1		NJ 405
	80	21	1.5	1.5	47.1	38.1		NU 405
	80	21	1.5	1.5	47.1	38.1		NUP 405
30	55	13	1	0.6	17.9	17.3		N 1006
	55	13	1	0.6	17.9	17.3		NJ 1006
	55	13	1	0.6	17.9	17.3		NU 1006
	55	13	1	0.6	17.9	17.3		NUP 1006
	62	16	1	0.6	23.7	20.6		N 206
	62	16	1	0.6	38.0	36.5		N 206 E
	62	16	1	0.6	23.7	20.6		NF 206
	62	16	1	0.6	38.0	36.5		NF 206 E

Dimensions				Load Rating		AEC Bearing	M	Angle Ring
mm				kN				
d	D	B	r ₁	r	Dynamic (C)	Static (C ₀)		
	62	16	1	0.6	23.7	20.6	NJ 206	•
	62	16	1	0.6	38.0	36.5	NJ 206 E	•
	62	16	1	0.6	23.7	20.6	NU 206	•
	62	16	1	0.6	38.0	36.5	NU 206 E	•
	62	16	1	0.6	23.7	20.6	NUP 206	
	62	16	1	0.6	38.0	36.5	NUP 206 E	
	62	20	1	0.6	33.6	32.2	N 2206	
	62	20	1	0.6	48.4	49.0	N 2206 E	
	62	20	1	0.6	33.6	32.2	NJ 2206	•
	62	20	1	0.6	48.4	49.0	NJ 2206 E	•
	62	20	1	0.6	33.6	32.2	NU 2206	•
	62	20	1	0.6	48.4	49.0	NU 2206 E	•
	62	20	1	0.6	33.6	32.2	NUP 2206	
	62	20	1	0.6	48.4	49.0	NUP 2206 E	
	72	19	1.1	1.1	38.7	33.2	N 306	
	72	19	1.1	1.1	51.2	48.0	N 306 EC	
	72	19	1.1	1.1	38.7	33.2	NF 306	
	72	19	1.1	1.1	51.2	48.0	NF 306 EC	
	72	19	1.1	1.1	38.7	33.2	NJ 306	•
	72	19	1.1	1.1	51.2	48.0	NJ 306 E	•
	72	19	1.1	1.1	38.7	33.2	NU 306	•
	72	19	1.1	1.1	51.2	48.0	NU 306 E	•
	72	19	1.1	1.1	38.7	33.2	NUP 306	
	72	19	1.1	1.1	51.2	48.0	NUP 306 E	
	72	27	1.1	1.1	52.3	48.9	NJ 2306	
	72	27	1.1	1.1	73.7	75.0	NJ 2306 E	•
	72	27	1.1	1.1	52.3	48.9	NU 2306	
	72	27	1.1	1.1	73.7	75.0	NU 2306 E	•
	72	27	1.1	1.1	52.3	48.9	NUP 2306	
	72	27	1.1	1.1	73.7	75.0	NUP 2306 E	
	90	23	1.5	1.5	60.5	53.0	N 406	
	90	23	1.5	1.5	60.5	53.0	NJ 406	•
	90	23	1.5	1.5	60.5	53.0	NU 406	•
	90	23	1.5	1.5	60.5	53.0	NUP 406	
35	62	14	1	0.6	35.8	38.0	N 1007	
	62	14	1	0.6	35.8	38.0	NJ 1007	
	62	14	1	0.6	35.8	38.0	NU 1007	
	62	14	1	0.6	35.8	38.0	NUP 1007	
	72	17	1.1	0.6	33.5	29.6	N 207	•
	72	17	1.1	0.6	48.4	48.0	N 207 EC	
	72	17	1.1	0.6	33.5	29.6	NF 207	•
	72	17	1.1	0.6	48.4	48.0	NF 207 EC	
	72	17	1.1	0.6	33.5	29.6	NJ 207	•
	72	17	1.1	0.6	48.4	48.0	NJ 207 EC	•
	72	17	1.1	0.6	33.5	29.6	NU 207	•
	72	17	1.1	0.6	48.4	48.0	NU 207 EC	•

Dimensions					Load Rating		AEC Bearing	M	Angle Ring
mm					kN				
d	D	B	r ₁	r	Dynamic (C)	Static (C ₀)			
	72	17	1.1	0.6	33.5	29.6	NUP 207	•	
	72	17	1.1	0.6	48.4	48.0	NUP 207 EC		
	72	23	1.1	0.6	49.8	49.3	N 2207		
	72	23	1.1	0.6	59.4	63.0	N 2207 EC		
	72	23	1.1	0.6	49.8	49.3	NJ 2207		•
	72	23	1.1	0.6	59.4	63.0	NJ 2207 EC		•
	72	23	1.1	0.6	49.8	49.3	NU 2207		•
	72	23	1.1	0.6	59.4	63.0	NU 2207 EC		•
	72	23	1.1	0.6	49.8	49.3	NUP 2207		
	72	23	1.1	0.6	59.4	63.0	NUP 2207 EC		
	80	21	1.5	1.1	46.8	40.9	N 307		
	80	21	1.5	1.1	64.4	63.0	N 307 EC		
	80	21	1.5	1.1	46.8	40.9	NF 307		
	80	21	1.5	1.1	64.4	63.0	NF 307 EC		
	80	21	1.5	1.1	46.8	40.9	NJ 307	•	•
	80	21	1.5	1.1	64.4	63.0	NJ 307 E	•	•
	80	21	1.5	1.1	46.8	40.9	NU 307	•	•
	80	21	1.5	1.1	64.4	63.0	NU 307 E	•	•
	80	21	1.5	1.1	46.8	40.9	NUP 307	•	
	80	21	1.5	1.1	64.4	63.0	NUP 307 E	•	
	80	31	1.5	1.1	61.5	58.1	NJ 2307	•	
	80	31	1.5	1.1	91.3	98.0	NJ 2307 EC		•
	80	31	1.5	1.1	61.5	58.1	NU 2307	•	
	80	31	1.5	1.1	91.3	98.0	NU 2307 EC		•
	80	31	1.5	1.1	61.5	58.1	NUP 2307	•	
	80	31	1.5	1.1	91.3	98.0	NUP 2307 EC		
	100	25	1.5	1.5	76.5	69.5	N 407		
	100	25	1.5	1.5	76.5	69.5	NJ 407		•
	100	25	1.5	1.5	76.5	69.5	NU 407		•
	100	25	1.5	1.5	76.5	69.5	NUP 407		
40	68	15	1	0.6	25.1	26.0	N 1008		
	68	15	1	0.6	25.1	26.0	NJ 1008		
	68	15	1	0.6	25.1	26.0	NU 1008		
	68	15	1	0.6	25.1	26.0	NUP 1008		
	80	18	1.1	1.1	43.8	40.5	N 208		
	80	18	1.1	1.1	53.9	53.0	N 208 EC		
	80	18	1.1	1.1	43.8	40.5	NF 208		
	80	18	1.1	1.1	53.9	53.0	NF 208 EC		
	80	18	1.1	1.1	43.8	40.5	NJ 208	•	•
	80	18	1.1	1.1	53.9	53.0	NJ 208 E		•
	80	18	1.1	1.1	43.8	40.5	NU 208	•	•
	80	18	1.1	1.1	53.9	53.0	NU 208 E		•
	80	18	1.1	1.1	43.8	40.5	NUP 208	•	
	80	23	1.1	1.1	59.2	59.6	N 2208		
	80	23	1.1	1.1	70.4	75.0	N 2208 EC		
	80	23	1.1	1.1	59.2	59.6	NJ 2208		

Dimensions					Load Rating		AEC Bearing	M	Angle Ring
mm					kN				
d	D	B	r ₁	r	Dynamic (C)	Static (C ₀)			
	80	23	1.1	1.1	70.4	75.0	NJ 2208 E		
	80	23	1.1	1.1	59.2	59.6	NU 2208		
	80	23	1.1	1.1	70.4	75.0	NU 2208 E		
	80	23	1.1	1.1	59.2	59.6	NUP 2208		
	80	23	1.1	1.1	70.4	75.0	NUP 2208 E		
	90	23	1.5	1.5	59.3	54.3	N 308	•	
	90	23	1.5	1.5	80.9	78.0	N 308 EC		
	90	23	1.5	1.5	59.3	54.3	NF 308	•	
	90	23	1.5	1.5	80.9	78.0	NF 308 EC		
	90	23	1.5	1.5	59.3	54.3	NJ 308		
	90	23	1.5	1.5	80.9	78.0	NJ 308 EC		
	90	23	1.5	1.5	59.3	54.3	NU 308		
	90	23	1.5	1.5	80.9	78.0	NU 308 E		
	90	23	1.5	1.5	59.3	54.3	NUP 308		
	90	23	1.5	1.5	80.9	78.0	NUP 308 E		
	90	33	1.5	1.5	84.3	85.4	NJ 2308		
	90	33	1.5	1.5	112.0	120.0	NJ 2308 E		
	90	33	1.5	1.5	84.3	85.4	NU 2308		
	90	33	1.5	1.5	112.0	120.0	NU 2308 E		
	90	33	1.5	1.5	84.3	85.4	NUP 2308		
	90	33	1.5	1.5	112.0	120.0	NUP 2308 E		
	110	27	2	2	96.8	90.0	N 408		
	110	27	2	2	96.8	90.0	NJ 408		
	110	27	2	2	96.8	90.0	NU 408		
	110	27	2	2	96.8	90.0	NUP 408		
45	75	16	1	0.6	28.1	27.7	N 1009		
	75	16	1	0.6	44.6	52.0	N 1009 E		
	75	16	1	0.6	28.1	27.7	NJ 1009	•	
	75	16	1	0.6	44.6	52.0	NJ 1009 E		
	75	16	1	0.6	28.1	27.7	NU 1009	•	
	75	16	1	0.6	44.6	52.0	NU 1009 E		
	75	16	1	0.6	28.1	27.7	NUP 1009	•	
	75	16	1	0.6	44.6	52.0	NUP 1009 E		
	85	19	1.1	1.1	46.2	44.3	N 209		
	85	19	1.1	1.1	60.5	64.0	N 209 E		
	85	19	1.1	1.1	46.2	44.3	NF 209		
	85	19	1.1	1.1	60.5	64.0	NF 209 E		
	85	19	1.1	1.1	46.2	44.3	NJ 209	•	•
	85	19	1.1	1.1	60.5	64.0	NJ 209 E		•
	85	19	1.1	1.1	46.2	44.3	NU 209	•	•
	85	19	1.1	1.1	60.5	64.0	NU 209 E		•
	85	19	1.1	1.1	46.2	44.3	NUP 209	•	
	85	19	1.1	1.1	60.5	64.0	NUP 209 E		
	85	23	1.1	1.1	62.3	65.2	NJ 2209	•	
	85	23	1.1	1.1	73.7	81.5	NJ 2209 E	•	•
	85	23	1.1	1.1	62.3	65.2	NU 2209	•	

Dimensions					Load Rating		AEC Bearing	M	Angle Ring
mm					kN				
d	D	B	r ₁	r	Dynamic (C)	Static (C ₀)			
	85	23	1.1	1.1	73.7	81.5	NU 2209 E	•	•
	85	23	1.1	1.1	62.3	65.2	NUP 2209	•	
	85	23	1.1	1.1	73.7	81.5	NUP 2209 E	•	
	100	25	1.5	1.5	75.0	68.3	N 309	•	
	100	25	1.5	1.5	99.0	100.0	N 309 EC		
	100	25	1.5	1.5	75.0	68.3	NF 309		
	100	25	1.5	1.5	99.0	100.0	NF 309 EC		
	100	25	1.5	1.5	75.0	68.3	NJ 309	•	•
	100	25	1.5	1.5	99.0	100.0	NJ 309 E		•
	100	25	1.5	1.5	75.0	68.3	NU 309	•	•
	100	25	1.5	1.5	99.0	100.0	NU 309 E		•
	100	25	1.5	1.5	75.0	68.3	NUP 309	•	
	100	25	1.5	1.5	99.0	100.0	NUP 309 E		
	100	36	1.5	1.5	102.0	101.0	NJ 2309		•
	100	36	1.5	1.5	138.0	153.0	NJ 2309 E		•
	100	36	1.5	1.5	102.0	101.0	NU 2309		•
	100	36	1.5	1.5	138.0	153.0	NU 2309 E		•
	100	36	1.5	1.5	102.0	101.0	NUP 2309		
	100	36	1.5	1.5	138.0	153.0	NUP 2309 E		
	120	29	2	2	106.0	102.0	N 409		
	120	29	2	2	106.0	102.0	NJ 409		•
	120	29	2	2	106.0	102.0	NU 409		•
	120	29	2	2	106.0	102.0	NUP 409		
50	80	16	1	1	34.5	34.5	N 1010		
	80	16	1	1	34.5	34.5	NJ 1010		
	80	16	1	1	34.5	34.5	NU 1010		
	80	16	1	1	34.5	34.5	NUP 1010		
	90	20	1.1	1.1	48.3	48.1	N 210		
	90	20	1.1	1.1	64.4	69.5	N 210 E		
	90	20	1.1	1.1	48.3	48.1	NF 210		
	90	20	1.1	1.1	64.4	69.5	NF 210 E		
	90	20	1.1	1.1	48.3	48.1	NJ 210	•	•
	90	20	1.1	1.1	64.4	69.5	NJ 210 E		•
	90	20	1.1	1.1	48.3	48.1	NU 210	•	•
	90	20	1.1	1.1	64.4	69.5	NU 210 E		•
	90	20	1.1	1.1	48.3	48.1	NUP 210	•	
	90	20	1.1	1.1	64.4	69.5	NUP 210 E		
	90	23	1.1	1.1	65.3	70.8	NJ 2210		
	90	23	1.1	1.1	78.1	88.0	NJ 2210 E		•
	90	23	1.1	1.1	65.3	70.8	NU 2210		
	90	23	1.1	1.1	78.1	88.0	NU 2210 E		•
	90	23	1.1	1.1	65.3	70.8	NUP 2210		
	90	23	1.1	1.1	78.1	88.0	NUP 2210 E		
	110	27	2	2	91.6	86.9	N 310		
	110	27	2	2	110.0	112.0	N 310 E		
	110	27	2	2	91.6	86.9	NF 310		

Dimensions					Load Rating		AEC Bearing	M	Angle Ring
mm					kN				
d	D	B	r ₁	r	Dynamic (C)	Static (C ₀)			
	110	27	2	2	110.0	112.0	NF 310 E		
	110	27	2	2	91.6	86.9	NJ 310		•
	110	27	2	2	110.0	112.0	NJ 310 E		•
	110	27	2	2	91.6	86.9	NU 310		•
	110	27	2	2	110.0	112.0	NU 310 E		•
	110	27	2	2	91.6	86.9	NUP 310		
	110	27	2	2	110.0	112.0	NUP 310 E		
	110	40	2	2	127.0	132.0	NJ 2310		•
	110	40	2	2	161.0	186.0	NJ 2310 E		•
	110	40	2	2	127.0	132.0	NU 2310		•
	110	40	2	2	161.0	186.0	NU 2310 E		•
	110	40	2	2	127.0	132.0	NUP 2310		
	110	40	2	2	161.0	186.0	NUP 2310 E		
	130	31	2.1	2.1	130.0	127.0	N 410		
	130	31	2.1	2.1	130.0	127.0	NJ 410		•
	130	31	2.1	2.1	130.0	127.0	NU 410		•
	130	31	2.1	2.1	130.0	127.0	NUP 410		
55	90	18	1.1	1	35.9	38.7	N 1011		
	90	18	1.1	1	57.2	69.5	N 1011 E		
	90	18	1.1	1	35.9	38.7	NJ 1011		
	90	18	1.1	1	57.2	69.5	NJ 1011 E		
	90	18	1.1	1	35.9	38.7	NU 1011		
	90	18	1.1	1	57.2	69.5	NU 1011 E		
	90	18	1.1	1	35.9	38.7	NUP 1011		
	90	18	1.1	1	57.2	69.5	NUP 1011 E		
	100	21	1.5	1.1	58.4	59.2	N 211	•	
	100	21	1.5	1.1	84.2	95.0	N 211 E		
	100	21	1.5	1.1	58.4	59.2	NF 211		
	100	21	1.5	1.1	84.2	95.0	NF 211 E		
	100	21	1.5	1.1	58.4	59.2	NJ 211	•	
	100	21	1.5	1.1	84.2	95.0	NJ 211 E	•	
	100	21	1.5	1.1	58.4	59.2	NU 211	•	
	100	21	1.5	1.1	84.2	95.0	NU 211 E	•	
	100	21	1.5	1.1	58.4	59.2	NUP 211		
	100	21	1.5	1.1	84.2	95.0	NUP 211 E		
	100	25	1.5	1.1	76.7	84.1	N 2211		
	100	25	1.5	1.1	99.0	118.0	N 2211 E		
	100	25	1.5	1.1	76.7	84.1	NJ 2211		
	100	25	1.5	1.1	99.0	118.0	NJ 2211 E	•	
	100	25	1.5	1.1	76.7	84.1	NU 2211		
	100	25	1.5	1.1	99.0	118.0	NU 2211 E	•	
	100	25	1.5	1.1	76.7	84.1	NUP 2211		
	100	25	1.5	1.1	99.0	118.0	NUP 2211 E		
	120	29	2	2	108.0	101.0	N 311		
	120	29	2	2	138.0	143.0	N 311 E		
	120	29	2	2	108.0	101.0	NF 311		

Dimensions					Load Rating		AEC Bearing	M	Angle Ring
mm					kN				
d	D	B	r ₁	r	Dynamic (C)	Static (C ₀)			
	120	29	2	2	138.0	143.0	NF 311 E		
	120	29	2	2	108.0	101.0	NJ 311	•	
	120	29	2	2	138.0	143.0	NJ 311 E	•	
	120	29	2	2	108.0	101.0	NU 311	•	
	120	29	2	2	138.0	143.0	NU 311 E	•	
	120	29	2	2	108.0	101.0	NUP 311		
	120	29	2	2	138.0	143.0	NUP 311 E		
	120	43	2	2	145.0	148.0	NJ 2311	•	
	120	43	2	2	201.0	232.0	NJ 2311 E	•	
	120	43	2	2	145.0	148.0	NU 2311	•	
	120	43	2	2	201.0	232.0	NU 2311 E	•	
	120	43	2	2	145.0	148.0	NUP 2311		
	120	43	2	2	201.0	232.0	NUP 2311 E		
	140	33	2.1	2.1	142.0	140.0	N 411		
	140	33	2.1	2.1	142.0	140.0	NJ 411	•	
	140	33	2.1	2.1	142.0	140.0	NU 411	•	
	140	33	2.1	2.1	142.0	140.0	NUP 411		
60	95	18	1.1	1	37.4	44.0	N 1012		
	95	18	1.1	1	37.4	44.0	NJ 1012		
	95	18	1.1	1	37.4	44.0	NU 1012		
	95	18	1.1	1	37.4	44.0	NUP 1012		
	110	22	1.5	1.5	68.2	70.1	N 212		
	110	22	1.5	1.5	93.5	102.0	N 212 E		
	110	22	1.5	1.5	68.2	70.1	NF 212		
	110	22	1.5	1.5	93.5	102.0	NF 212 EC		
	110	22	1.5	1.5	68.2	70.1	NJ 212	•	
	110	22	1.5	1.5	93.5	102.0	NJ 212 EC	•	
	110	22	1.5	1.5	68.2	70.1	NU 212	•	
	110	22	1.5	1.5	93.5	102.0	NU 212 EC	•	
	110	22	1.5	1.5	68.2	70.1	NUP 212		
	110	22	1.5	1.5	93.5	102.0	NUP 212 EC		
	110	28	1.5	1.5	97.5	111.0	N 2212		
	110	28	1.5	1.5	128.0	153.0	N 2212 EC		
	110	28	1.5	1.5	97.5	111.0	NJ 2212		
	110	28	1.5	1.5	128.0	153.0	NJ 2212 EC	•	
	110	28	1.5	1.5	97.5	111.0	NU 2212		
	110	28	1.5	1.5	128.0	153.0	NU 2212 EC	•	
	110	28	1.5	1.5	97.5	111.0	NUP 2212		
	110	28	1.5	1.5	128.0	153.0	NUP 2212 EC		
	130	31	2.1	2.1	129.0	126.0	N 312		
	130	31	2.1	2.1	151.0	160.0	N 312 EC		
	130	31	2.1	2.1	129.0	126.0	NF 312		
	130	31	2.1	2.1	151.0	160.0	NF 312 EC		
	130	31	2.1	2.1	129.0	126.0	NJ 312	•	
	130	31	2.1	2.1	151.0	160.0	NJ 312 EC		•
	130	31	2.1	2.1	129.0	126.0	NU 312		•

Dimensions				Load Rating		AEC Bearing	M	Angle Ring
mm				kN				
d	D	B	r ₁	r	Dynamic (C)	Static (C ₀)		
	130	31	2.1	2.1	151.0	160.0	NU 312 EC	•
	130	31	2.1	2.1	129.0	126.0	NUP 312	
	130	31	2.1	2.1	151.0	160.0	NUP 312 EC	
	130	46	2.1	2.1	176.0	187.0	NJ 2312	•
	130	46	2.1	2.1	224.0	265.0	NJ 2312 EC	•
	130	46	2.1	2.1	176.0	187.0	NU 2312	•
	130	46	2.1	2.1	224.0	265.0	NU 2312 EC	•
	130	46	2.1	2.1	176.0	187.0	NUP 2312	
	130	46	2.1	2.1	224.0	265.0	NUP 2312 EC	
	150	35	2.1	2.1	168.0	173.0	N 412	
	150	35	2.1	2.1	168.0	173.0	NJ 412	• •
	150	35	2.1	2.1	168.0	173.0	NU 412	• •
	150	35	2.1	2.1	168.0	173.0	NUP 412	•
65	100	18	1.1	1	38.0	46.5	N 1013	
	100	18	1.1	1	38.0	46.5	NJ 1013	
	100	18	1.1	1	38.0	46.5	NU 1013	
	100	18	1.1	1	38.0	46.5	NUP 1013	
	120	23	1.5	1.5	79.9	83.3	N 213	
	120	23	1.5	1.5	106.0	118.0	N 213 EC	
	120	23	1.5	1.5	79.9	83.3	NF 213	
	120	23	1.5	1.5	106.0	118.0	NF 213 EC	
	120	23	1.5	1.5	79.9	83.3	NJ 213	•
	120	23	1.5	1.5	106.0	118.0	NJ 213 EC	•
	120	23	1.5	1.5	79.9	83.3	NU 213	•
	120	23	1.5	1.5	106.0	118.0	NU 213 EC	•
	120	23	1.5	1.5	79.9	83.3	NUP 213	
	120	23	1.5	1.5	106.0	118.0	NUP 213 EC	
	120	31	1.5	1.5	116.0	135.0	NJ 2213	•
	120	31	1.5	1.5	147.0	180.0	NJ 2213 EC	•
	120	31	1.5	1.5	116.0	135.0	NU 2213	•
	120	31	1.5	1.5	147.0	180.0	NU 2213 EC	•
	120	31	1.5	1.5	116.0	135.0	NUP 2213	
	120	31	1.5	1.5	147.0	180.0	NUP 2213 EC	
	140	33	2.1	2.1	143.0	141.0	N 313	
	140	33	2.1	2.1	183.0	196.0	N 313 EC	
	140	33	2.1	2.1	143.0	141.0	NF 313	
	140	33	2.1	2.1	183.0	196.0	NF 313 EC	
	140	33	2.1	2.1	143.0	141.0	NJ 313	•
	140	33	2.1	2.1	183.0	196.0	NJ 313 EC	•
	140	33	2.1	2.1	143.0	141.0	NU 313	•
	140	33	2.1	2.1	183.0	196.0	NU 313 EC	•
	140	33	2.1	2.1	143.0	141.0	NUP 313	
	140	33	2.1	2.1	183.0	196.0	NUP 313 EC	
	140	48	2.1	2.1	198.0	215.0	NJ 2313	•
	140	48	2.1	2.1	251.0	290.0	NJ 2313 EC	•
	140	48	2.1	2.1	198.0	215.0	NU 2313	•

Dimensions					Load Rating		AEC Bearing	M	Angle Ring
mm					kN				
d	D	B	r ₁	r	Dynamic (C)	Static (C ₀)			
	140	48	2.1	2.1	251.0	290.0	NU 2313 EC		•
	140	48	2.1	2.1	198.0	215.0	NUP 2313		
	140	48	2.1	2.1	251.0	290.0	NUP 2313 EC		
	160	37	2.1	2.1	183.0	190.0	N 413		
	160	37	2.1	2.1	183.0	190.0	NJ 413		•
	160	37	2.1	2.1	183.0	190.0	NU 413		•
	160	37	2.1	2.1	183.0	190.0	NUP 413		
70	110	20	1.1	1	56.1	67.2	N 1014		
	110	20	1.1	1	56.1	67.2	NJ 1014		
	110	20	1.1	1	56.1	67.2	NU 1014		
	110	20	1.1	1	56.1	67.2	NUP 1014		
	125	24	1.5	1.5	83.5	89.6	N 214	•	
	125	24	1.5	1.5	119.0	137.0	N 214 EC		
	125	24	1.5	1.5	83.5	89.6	NF 214	•	
	125	24	1.5	1.5	119.0	137.0	NF 214 EC		
	125	24	1.5	1.5	83.5	89.6	NJ 214		•
	125	24	1.5	1.5	119.0	137.0	NJ 214 EC		•
	125	24	1.5	1.5	83.5	89.6	NU 214		•
	125	24	1.5	1.5	119.0	137.0	NU 214 EC		•
	125	24	1.5	1.5	83.5	89.6	NUP 214		
	125	24	1.5	1.5	119.0	137.0	NUP 214 EC		
	125	31	1.5	1.5	121.0	145.0	NJ 2214	•	•
	125	31	1.5	1.5	154.0	193.0	NJ 2214 EC		•
	125	31	1.5	1.5	121.0	145.0	NU 2214	•	•
	125	31	1.5	1.5	154.0	193.0	NU 2214 EC		•
	125	31	1.5	1.5	121.0	145.0	NUP 2214	•	
	125	31	1.5	1.5	154.0	193.0	NUP 2214 EC		
	150	35	2.1	2.1	158.0	158.0	N 314		
	150	35	2.1	2.1	205.0	228.0	N 314 EC		
	150	35	2.1	2.1	158.0	158.0	NF 314		
	150	35	2.1	2.1	205.0	228.0	NF 314 EC		
	150	35	2.1	2.1	158.0	158.0	NJ 314	•	•
	150	35	2.1	2.1	205.0	228.0	NJ 314 E		•
	150	35	2.1	2.1	158.0	158.0	NU 314	•	•
	150	35	2.1	2.1	205.0	228.0	NU 314 E		•
	150	35	2.1	2.1	158.0	158.0	NUP 314	•	
	150	35	2.1	2.1	205.0	228.0	NUP 314 E		
150	51	2.1	2.1	222.0	245.0	NJ 2314			
150	51	2.1	2.1	275.0	325.0	NJ 2314 E		•	
150	51	2.1	2.1	222.0	245.0	NU 2314			
150	51	2.1	2.1	275.0	325.0	NU 2314 E		•	
150	51	2.1	2.1	222.0	245.0	NUP 2314			
150	51	2.1	2.1	275.0	325.0	NUP 2314 E			
180	42	3	3	229.0	240.0	N 414			
180	42	3	3	229.0	240.0	NJ 414		•	
180	42	3	3	229.0	240.0	NU 414		•	

Dimensions					Load Rating		AEC Bearing	M	Angle Ring
mm					kN				
d	D	B	r ₁	r	Dynamic (C)	Static (C ₀)			
75	180	42	3	3	229.0	240.0	NUP 414		
	115	20	1.1	1	58.3	71.0	N 1015		
	115	20	1.1	1	58.3	71.0	NJ 1015	•	
	115	20	1.1	1	58.3	71.0	NU 1015	•	
	115	20	1.1	1	58.3	71.0	NUP 1015	•	
	130	25	1.5	1.5	96.8	105.0	N 215		
	130	25	1.5	1.5	130.0	156.0	N 215 E		
	130	25	1.5	1.5	96.8	105.0	NF 215		
	130	25	1.5	1.5	130.0	156.0	NF 215 E		
	130	25	1.5	1.5	96.8	105.0	NJ 215		•
	130	25	1.5	1.5	130.0	156.0	NJ 215 E		•
	130	25	1.5	1.5	96.8	105.0	NU 215		•
	130	25	1.5	1.5	130.0	156.0	NU 215 E		•
	130	25	1.5	1.5	96.8	105.0	NUP 215		
	130	25	1.5	1.5	130.0	156.0	NUP 215 E		
	130	31	1.5	1.5	132.0	156.0	NJ 2215	•	•
	130	31	1.5	1.5	161.0	208.0	NJ 2215 E		•
	130	31	1.5	1.5	132.0	156.0	NU 2215	•	•
	130	31	1.5	1.5	161.0	208.0	NU 2215 E		•
	130	31	1.5	1.5	132.0	156.0	NUP 2215	•	
	130	31	1.5	1.5	161.0	208.0	NUP 2215 E		
	160	37	2.1	2.1	190.0	192.0	N 315		
	160	37	2.1	2.1	242.0	265.0	N 315 EC		
	160	37	2.1	2.1	190.0	192.0	NF 315		
	160	37	2.1	2.1	242.0	265.0	NF 315 EC		
	160	37	2.1	2.1	190.0	192.0	NJ 315	•	•
	160	37	2.1	2.1	242.0	265.0	NJ 315 EC		•
	160	37	2.1	2.1	190.0	192.0	NU 315	•	•
	160	37	2.1	2.1	242.0	265.0	NU 315 EC		•
	160	37	2.1	2.1	190.0	192.0	NUP 315	•	
	160	37	2.1	2.1	242.0	265.0	NUP 315 EC		
	160	55	2.1	2.1	272.0	305.0	NJ 2315		•
160	55	2.1	2.1	330.0	400.0	NJ 2315 EC		•	
160	55	2.1	2.1	272.0	305.0	NU 2315		•	
160	55	2.1	2.1	330.0	400.0	NU 2315 EC		•	
160	55	2.1	2.1	272.0	305.0	NUP 2315			
160	55	2.1	2.1	330.0	400.0	NUP 2315 EC			
190	45	3	3	264.0	280.0	N 415			
190	45	3	3	264.0	280.0	NJ 415		•	
190	45	3	3	264.0	280.0	NU 415		•	
190	45	3	3	264.0	280.0	NUP 415			
80	125	22	1.1	1	66.0	81.5	N 1016		
	125	22	1.1	1	66.0	81.5	NJ 1016		
	125	22	1.1	1	66.0	81.5	NU 1016		
	125	22	1.1	1	66.0	81.5	NUP 1016		

Dimensions				Load Rating		AEC Bearing	M	Angle Ring
mm				kN				
d	D	B	r ₁	r	Dynamic (C)	Static (C ₀)		
	140	26	2	2	111.0	121.0	N 216	
	140	26	2	2	138.0	166.0	N 216 EC	
	140	26	2	2	111.0	121.0	NF 216	
	140	26	2	2	138.0	166.0	NF 216 EC	
	140	26	2	2	111.0	121.0	NJ 216	•
	140	26	2	2	138.0	166.0	NJ 216 EC	•
	140	26	2	2	111.0	121.0	NU 216	•
	140	26	2	2	138.0	166.0	NU 216 EC	•
	140	26	2	2	111.0	121.0	NUP 216	
	140	26	2	2	138.0	166.0	NUP 216 EC	
	140	33	2	2	154.0	185.0	NJ 2216	•
	140	33	2	2	187.0	245.0	NJ 2216 EC	•
	140	33	2	2	154.0	185.0	NU 2216	•
	140	33	2	2	187.0	245.0	NU 2216 EC	•
	140	33	2	2	154.0	185.0	NUP 2216	
	140	33	2	2	187.0	245.0	NUP 2216 EC	
	170	39	2.1	2.1	199.0	207.0	N 316	
	170	39	2.1	2.1	260.0	290.0	N 316 EC	
	170	39	2.1	2.1	199.0	207.0	NF 316	
	170	39	2.1	2.1	260.0	290.0	NF 316 EC	
	170	39	2.1	2.1	199.0	207.0	NJ 316	•
	170	39	2.1	2.1	260.0	290.0	NJ 316 EC	•
	170	39	2.1	2.1	199.0	207.0	NU 316	•
	170	39	2.1	2.1	260.0	290.0	NU 316 EC	•
	170	39	2.1	2.1	199.0	207.0	NUP 316	
	170	39	2.1	2.1	260.0	290.0	NUP 316 EC	
	170	58	2.1	2.1	287.0	332.0	NJ 2316	•
	170	58	2.1	2.1	358.0	440.0	NJ 2316 EC	•
	170	58	2.1	2.1	287.0	332.0	NU 2316	•
	170	58	2.1	2.1	358.0	440.0	NU 2316 EC	•
	170	58	2.1	2.1	287.0	332.0	NUP 2316	
	170	58	2.1	2.1	358.0	440.0	NUP 2316 EC	
	200	48	3	3	303.0	320.0	N 416	
	200	48	3	3	303.0	320.0	NJ 416	•
	200	48	3	3	303.0	320.0	NU 416	•
	200	48	3	3	303.0	320.0	NUP 416	
85	130	22	1.1	1	68.2	86.5	N 1017	•
	130	22	1.1	1	68.2	86.5	NJ 1017	•
	130	22	1.1	1	68.2	86.5	NU 1017	•
	130	22	1.1	1	68.2	86.5	NUP 1017	•
	150	28	2	2	125.0	139.0	N 217	
	150	28	2	2	165.0	200.0	N 217 EC	
	150	28	2	2	125.0	139.0	NF 217	
	150	28	2	2	165.0	200.0	NF 217 EC	
	150	28	2	2	125.0	139.0	NJ 217	•
	150	28	2	2	165.0	200.0	NJ 217 EC	•

Dimensions				Load Rating		AEC Bearing	M	Angle Ring
mm				kN				
d	D	B	r ₁	r	Dynamic (C)	Static (C ₀)		
	150	28	2	2	125.0	139.0	NU 217	•
	150	28	2	2	165.0	200.0	NU 217 EC	•
	150	28	2	2	125.0	139.0	NUP 217	
	150	28	2	2	165.0	200.0	NUP 217 EC	
	150	36	2	2	177.0	217.0	NJ 2217	•
	150	36	2	2	216.0	280.0	NJ 2217 EC	•
	150	36	2	2	177.0	217.0	NU 2217	•
	150	36	2	2	216.0	280.0	NU 2217 EC	•
	150	36	2	2	177.0	217.0	NUP 2217	
	150	36	2	2	216.0	280.0	NUP 2217 EC	
	180	41	3	3	222.0	228.0	N 317	
	180	41	3	3	297.0	335.0	N 317 EC	
	180	41	3	3	222.0	228.0	NF 317	
	180	41	3	3	297.0	335.0	NF 317 EC	
	180	41	3	3	222.0	228.0	NJ 317	•
	180	41	3	3	297.0	335.0	NJ 317 EC	•
	180	41	3	3	222.0	228.0	NU 317	•
	180	41	3	3	297.0	335.0	NU 317 EC	•
	180	41	3	3	222.0	228.0	NUP 317	
	180	41	3	3	297.0	335.0	NUP 317 EC	
	180	60	3	3	311.0	353.0	N 2317	
	180	60	3	3	396.0	490.0	N 2317 EC	
	180	60	3	3	311.0	353.0	NJ 2317	•
	180	60	3	3	396.0	490.0	NJ 2317 EC	•
	180	60	3	3	311.0	353.0	NU 2317	•
	180	60	3	3	396.0	490.0	NU 2317 EC	•
	180	60	3	3	311.0	353.0	NUP 2317	
	180	60	3	3	396.0	490.0	NUP 2317 EC	
	210	52	4	4	319.0	335.0	N 417	
	210	52	4	4	319.0	335.0	NJ 417	•
	210	52	4	4	319.0	335.0	NU 417	•
	210	52	4	4	319.0	335.0	NUP 417	
90	140	24	1.5	1.1	80.9	104.0	N 1018	•
	140	24	1.5	1.1	80.9	104.0	NJ 1018	•
	140	24	1.5	1.1	80.9	104.0	NU 1018	•
	140	24	1.5	1.1	80.9	104.0	NUP 1018	•
	160	30	2	2	149.0	163.0	N 218	
	160	30	2	2	183.0	220.0	N 218 EC	
	160	30	2	2	149.0	163.0	NF 218	
	160	30	2	2	183.0	220.0	NF 218 EC	
	160	30	2	2	149.0	163.0	NJ 218	•
	160	30	2	2	183.0	220.0	NJ 218 EC	•
	160	30	2	2	149.0	163.0	NU 218	•
	160	30	2	2	183.0	220.0	NU 218 EC	•
	160	30	2	2	149.0	163.0	NUP 218	•
	160	30	2	2	183.0	220.0	NUP 218 EC	

Dimensions					Load Rating		AEC Bearing	M	Angle Ring
mm					kN				
d	D	B	r ₁	r	Dynamic (C)	Static (C ₀)			
	160	40	2	2	204.0	244.0	NJ 2218		•
	160	40	2	2	242.0	315.0	NJ 2218 EC		•
	160	40	2	2	204.0	244.0	NU 2218		•
	160	40	2	2	242.0	315.0	NU 2218 EC		•
	160	40	2	2	204.0	244.0	NUP 2218		
	160	40	2	2	242.0	315.0	NUP 2218 EC		
	190	43	3	3	255.0	270.0	N 318		
	190	43	3	3	319.0	360.0	N 318 EC		
	190	43	3	3	255.0	270.0	NF 318		
	190	43	3	3	319.0	360.0	NF 318 EC		
	190	43	3	3	255.0	270.0	NJ 318		•
	190	43	3	3	319.0	360.0	NJ 318 EC		•
	190	43	3	3	255.0	270.0	NU 318		•
	190	43	3	3	319.0	360.0	NU 318 EC		•
	190	43	3	3	255.0	270.0	NUP 318		
	190	43	3	3	319.0	360.0	NUP 318 EC		
	190	64	3	3	345.0	399.0	NJ 2318		•
	190	64	3	3	440.0	540.0	NJ 2318 EC		•
	190	64	3	3	345.0	399.0	NU 2318		•
	190	64	3	3	440.0	540.0	NU 2318 EC		•
	190	64	3	3	345.0	399.0	NUP 2318		
	190	64	3	3	440.0	540.0	NUP 2318 EC		
	225	54	4	4	380.0	415.0	N 418		
	225	54	4	4	380.0	415.0	NJ 418		•
	225	54	4	4	380.0	415.0	NU 418		•
	225	54	4	4	380.0	415.0	NUP 418		
95	145	24	1.5	1.1	84.2	110.0	N 1019	•	
	145	24	1.5	1.1	84.2	110.0	NJ 1019	•	
	145	24	1.5	1.1	84.2	110.0	NU 1019	•	
	145	24	1.5	1.1	84.2	110.0	NUP 1019	•	
	170	32	2.1	2.1	173.0	195.0	N 219		
	170	32	2.1	2.1	220.0	265.0	N 219 EC		
	170	32	2.1	2.1	173.0	195.0	NF 219		
	170	32	2.1	2.1	220.0	265.0	NF 219 EC		
	170	32	2.1	2.1	173.0	195.0	NJ 219	•	•
	170	32	2.1	2.1	220.0	265.0	NJ 219 EC		•
	170	32	2.1	2.1	173.0	195.0	NU 219	•	•
	170	32	2.1	2.1	220.0	265.0	NU 219 EC		•
	170	32	2.1	2.1	173.0	195.0	NUP 219	•	
	170	32	2.1	2.1	220.0	265.0	NUP 219 EC		
	170	43	2.1	2.1	241.0	298.0	N 2219		
	170	43	2.1	2.1	286.0	375.0	N 2219 EC		
	170	43	2.1	2.1	241.0	298.0	NJ 2219		•
	170	43	2.1	2.1	286.0	375.0	NJ 2219 EC		•
	170	43	2.1	2.1	241.0	298.0	NU 2219		•
	170	43	2.1	2.1	286.0	375.0	NU 2219 EC		•

Dimensions				Load Rating		AEC Bearing	M	Angle Ring
mm				kN				
d	D	B	r ₁	r	Dynamic (C)	Static (C ₀)		
	170	43	2.1	2.1	241.0	298.0	NUP 2219	
	170	43	2.1	2.1	286.0	375.0	NUP 2219 EC	
	200	45	3	3	275.0	294.0	N 319	
	200	45	3	3	341.0	390.0	N 319 EC	
	200	45	3	3	275.0	294.0	NF 319	
	200	45	3	3	341.0	390.0	NF 319 EC	
	200	45	3	3	275.0	294.0	NJ 319	•
	200	45	3	3	341.0	390.0	NJ 319 EC	•
	200	45	3	3	275.0	294.0	NU 319	•
	200	45	3	3	341.0	390.0	NU 319 EC	•
	200	45	3	3	275.0	294.0	NUP 319	
	200	45	3	3	341.0	390.0	NUP 319 EC	
	200	67	3	3	393.0	466.0	NJ 2319	•
	200	67	3	3	468.0	585.0	NJ 2319 EC	•
	200	67	3	3	393.0	466.0	NU 2319	•
	200	67	3	3	468.0	585.0	NU 2319 EC	•
	200	67	3	3	393.0	466.0	NUP 2319	
	200	67	3	3	468.0	585.0	NUP 2319 EC	
	240	55	4	4	413.0	455.0	N 419	
	240	55	4	4	413.0	455.0	NJ 419	•
	240	55	4	4	413.0	455.0	NU 419	•
	240	55	4	4	413.0	455.0	NU P 419	
100	150	24	1.5	1.1	85.8	114.0	N 1020	•
	150	24	1.5	1.1	85.8	114.0	NJ 1020	•
	150	24	1.5	1.1	85.8	114.0	NU 1020	•
	150	24	1.5	1.1	85.8	114.0	NUP 1020	•
	180	34	2.1	2.1	192.0	217.0	N 220	•
	180	34	2.1	2.1	251.0	305.0	N 220 EC	
	180	34	2.1	2.1	192.0	217.0	NF 220	•
	180	34	2.1	2.1	251.0	305.0	NF 220 EC	
	180	34	2.1	2.1	192.0	217.0	NJ 220	•
	180	34	2.1	2.1	251.0	305.0	NJ 220 EC	•
	180	34	2.1	2.1	192.0	217.0	NU 220	•
	180	34	2.1	2.1	251.0	305.0	NU 220 EC	•
	180	34	2.1	2.1	192.0	217.0	NUP 220	•
	180	34	2.1	2.1	251.0	305.0	NUP 220 EC	
	180	46	2.1	2.1	270.0	338.0	NJ 2220	•
	180	46	2.1	2.1	336.0	450.0	NJ 2220 EC	•
	180	46	2.1	2.1	270.0	338.0	NU 2220	•
	180	46	2.1	2.1	336.0	450.0	NU 2220 EC	•
	180	46	2.1	2.1	270.0	338.0	NUP 2220	
	180	46	2.1	2.1	336.0	450.0	NUP 2220 EC	
	215	47	3	3	317.0	342.0	N 320	•
	215	47	3	3	391.0	440.0	N 320 EC	
	215	47	3	3	317.0	342.0	NF 320	•
	215	47	3	3	391.0	440.0	NF 320 EC	

Dimensions					Load Rating		AEC Bearing	M	Angle Ring
mm					kN				
d	D	B	r ₁	r	Dynamic (C)	Static (C ₀)			
	215	47	3	3	317.0	342.0	NJ 320	•	•
	215	47	3	3	391.0	440.0	NJ 320 EC		•
	215	47	3	3	317.0	342.0	NU 320	•	•
	215	47	3	3	391.0	440.0	NU 320 EC		•
	215	47	3	3	317.0	342.0	NUP 320	•	
	215	47	3	3	391.0	440.0	NUP 320 EC		
	215	73	3	3	460.0	553.0	NJ 2320		•
	215	73	3	3	583.0	735.0	NJ 2320 EC		•
	215	73	3	3	460.0	553.0	NU 2320		•
	215	73	3	3	583.0	735.0	NU 2320 EC		•
	215	73	3	3	460.0	553.0	NUP 2320		
	215	73	3	3	583.0	735.0	NUP 2320 EC		
	250	58	4	4	429.0	475.0	N 420		
	250	58	4	4	429.0	475.0	NJ 420		•
	250	58	4	4	429.0	475.0	NU 420		•
	250	58	4	4	429.0	475.0	NUP 420		
105	160	26	2	1.1	101.0	137.0	N 1021	•	
	160	26	2	1.1	101.0	137.0	NJ 1021	•	
	160	26	2	1.1	101.0	137.0	NU 1021	•	
	160	26	2	1.1	101.0	137.0	NUP 1021	•	
	190	36	2.1	2.1	210.0	241.0	N 221		
	190	36	2.1	2.1	264.0	315.0	N 221 EC		
	190	36	2.1	2.1	210.0	241.0	NJ 221		•
	190	36	2.1	2.1	264.0	315.0	NJ 221 EC		•
	190	36	2.1	2.1	210.0	241.0	NU 221		•
	190	36	2.1	2.1	264.0	315.0	NU 221 EC		•
	190	36	2.1	2.1	210.0	241.0	NUP 221		
	190	36	2.1	2.1	264.0	315.0	NUP 221 EC		
	225	49	3	3	361.0	393.0	N 321		
	225	49	3	3	440.0	500.0	N 321 EC		
	225	49	3	3	361.0	393.0	NF 321		
	225	49	3	3	440.0	500.0	NF 321 EC		
	225	49	3	3	361.0	393.0	NJ 321		•
	225	49	3	3	440.0	500.0	NJ 321 EC		•
	225	49	3	3	361.0	393.0	NU 321		•
	225	49	3	3	440.0	500.0	NU 321 EC		•
	225	49	3	3	361.0	393.0	NUP 321		
	225	49	3	3	440.0	500.0	NUP 321 EC		
	260	60	4	4	501.0	570.0	N 421		
	260	60	4	4	501.0	570.0	NJ 421		•
	260	60	4	4	501.0	570.0	NU 421		•
	260	60	4	4	501.0	570.0	NUP 421		
110	170	28	2	1.1	128.0	166.0	N 1022	•	
	170	28	2	1.1	128.0	166.0	NJ 1022	•	
	170	28	2	1.1	128.0	166.0	NU 1022	•	
	170	28	2	1.1	128.0	166.0	NUP 1022	•	

Dimensions				Load Rating		AEC Bearing	M	Angle Ring
mm				kN				
d	D	B	r ₁	r	Dynamic (C)	Static (C ₀)		
	200	38	2.1	2.1	240.0	272.0	N 222	
	200	38	2.1	2.1	292.0	365.0	N 222 EC	
	200	38	2.1	2.1	240.0	272.0	NF 222	
	200	38	2.1	2.1	292.0	365.0	NF 222 EC	
	200	38	2.1	2.1	240.0	272.0	NJ 222	•
	200	38	2.1	2.1	292.0	365.0	NJ 222 EC	•
	200	38	2.1	2.1	240.0	272.0	NU 222	•
	200	38	2.1	2.1	292.0	365.0	NU 222 EC	•
	200	38	2.1	2.1	240.0	272.0	NUP 222	
	200	38	2.1	2.1	292.0	365.0	NUP 222 EC	
	200	53	2.1	2.1	333.0	414.0	NJ 2222	•
	200	53	2.1	2.1	380.0	520.0	NJ 2222 EC	•
	200	53	2.1	2.1	333.0	414.0	NU 2222	•
	200	53	2.1	2.1	380.0	520.0	NU 2222 EC	•
	200	53	2.1	2.1	333.0	414.0	NUP 2222	
	200	53	2.1	2.1	380.0	520.0	NUP 2222 EC	
	240	50	3	3	408.0	449.0	N 322	
	240	50	3	3	468.0	540.0	N 322 EC	
	240	50	3	3	408.0	449.0	NF 322	
	240	50	3	3	468.0	540.0	NF 322 EC	
	240	50	3	3	408.0	449.0	NJ 322	•
	240	50	3	3	468.0	540.0	NJ 322 EC	•
	240	50	3	3	408.0	449.0	NU 322	•
	240	50	3	3	468.0	540.0	NU 322 EC	•
	240	50	3	3	408.0	449.0	NUP 322	
	240	50	3	3	468.0	540.0	NUP 322 EC	
	240	80	3	3	642.0	805.0	NJ 2322	• •
	240	80	3	3	682.0	900.0	NJ 2322 EC	• •
	240	80	3	3	642.0	805.0	NU 2322	• •
	240	80	3	3	682.0	900.0	NU 2322 EC	• •
	240	80	3	3	642.0	805.0	NUP 2322	•
	240	80	3	3	682.0	900.0	NUP 2322 EC	•
	280	65	4	4	523.0	585.0	N 422	
	280	65	4	4	523.0	585.0	NJ 422	•
	280	65	4	4	523.0	585.0	NU 422	•
	280	65	4	4	523.0	585.0	NUP 422	
115	250	53	3	3	420.0	545.0	NJ 323	•
	250	53	3	3	420.0	545.0	NU 323	•
	250	53	3	3	420.0	545.0	NUP 323	•
120	180	28	2	1.1	134.0	183.0	N 1024	•
	180	28	2	1.1	134.0	183.0	NJ 1024	•
	180	28	2	1.1	134.0	183.0	NU 1024	•
	180	28	2	1.1	134.0	183.0	NUP 1024	•
	215	40	2.1	2.1	272.0	318.0	N 224	•
	215	40	2.1	2.1	341.0	430.0	N 224 EC	•

Dimensions					Load Rating		AEC Bearing	M	Angle Ring
mm					kN				
d	D	B	r ₁	r	Dynamic (C)	Static (C ₀)			
	215	40	2.1	2.1	272.0	318.0	NF 224	•	
	215	40	2.1	2.1	341.0	430.0	NF 224 EC	•	
	215	40	2.1	2.1	272.0	318.0	NJ 224	•	•
	215	40	2.1	2.1	341.0	430.0	NJ 224 EC	•	•
	215	40	2.1	2.1	272.0	318.0	NU 224	•	•
	215	40	2.1	2.1	341.0	430.0	NU 224 EC	•	•
	215	40	2.1	2.1	272.0	318.0	NUP 224	•	
	215	40	2.1	2.1	341.0	430.0	NUP 224 EC	•	
	215	58	2.1	2.1	382.0	492.0	NJ 2224		•
	215	58	2.1	2.1	457.0	630.0	NJ 2224 EC		•
	215	58	2.1	2.1	382.0	492.0	NU 2224		•
	215	58	2.1	2.1	457.0	630.0	NU 2224 EC		•
	215	58	2.1	2.1	382.0	492.0	NUP 2224		
	215	58	2.1	2.1	457.0	630.0	NUP 2224 EC		
	260	55	3	3	476.0	516.0	N 324		
	260	55	3	3	539.0	620.0	N 324 EC		
	260	55	3	3	476.0	516.0	NF 324		
	260	55	3	3	539.0	620.0	NF 324 EC		
	260	55	3	3	476.0	516.0	NJ 324		•
	260	55	3	3	539.0	620.0	NJ 324 EC		•
	260	55	3	3	476.0	516.0	NU 324		•
	260	55	3	3	539.0	620.0	NU 324 EC		•
	260	55	3	3	476.0	516.0	NUP 324		
	260	55	3	3	539.0	620.0	NUP 324 EC		
	260	86	3	3	748.0	926.0	N 2324	•	
	260	86	3	3	792.0	1040.0	N 2324 E	•	
	260	86	3	3	748.0	926.0	NJ 2324	•	
	260	86	3	3	792.0	1040.0	NJ 2324 E	•	•
	260	86	3	3	748.0	926.0	NU 2324	•	
	260	86	3	3	792.0	1040.0	NU 2324 E	•	•
	260	86	3	3	748.0	926.0	NUP 2324	•	
	260	86	3	3	792.0	1040.0	NUP 2324 E	•	
	310	72	5	5	644.0	735.0	N 424		
	310	72	5	5	644.0	735.0	NJ 424		•
	310	72	5	5	644.0	735.0	NU 424		•
	310	72	5	5	644.0	735.0	NUP 424		
130	200	33	2	1.1	165.0	224.0	N 1026	•	
	200	33	2	1.1	165.0	224.0	NJ 1026	•	
	200	33	2	1.1	165.0	224.0	NU 1026	•	
	200	33	2	1.1	165.0	224.0	NUP 1026	•	
	230	40	3	3	283.0	342.0	N 226		
	230	40	3	3	358.0	455.0	N 226 EC	•	
	230	40	3	3	283.0	342.0	NF 226		
	230	40	3	3	358.0	455.0	NF 226 EC	•	
	230	40	3	3	283.0	342.0	NJ 226		•
	230	40	3	3	358.0	455.0	NJ 226 EC	•	•

Dimensions				Load Rating		AEC Bearing	M	Angle Ring
mm				kN				
d	D	B	r ₁	r	Dynamic (C)	Static (C ₀)		
	230	40	3	3	283.0	342.0	NU 226	•
	230	40	3	3	358.0	455.0	NU 226 EC	• •
	230	40	3	3	283.0	342.0	NUP 226	
	230	40	3	3	358.0	455.0	NUP 226 EC	•
	230	64	3	3	415.0	560.0	N 2226	•
	230	64	3	3	528.0	735.0	N 2226 EC	•
	230	64	3	3	415.0	560.0	NJ 2226	• •
	230	64	3	3	528.0	735.0	NJ 2226 EC	• •
	230	64	3	3	415.0	560.0	NU 2226	• •
	230	64	3	3	528.0	735.0	NU 2226 EC	• •
	230	64	3	3	415.0	560.0	NUP 2226	•
	230	64	3	3	528.0	735.0	NUP 2226 EC	•
	280	58	4	4	560.0	629.0	N 326	
	280	58	4	4	627.0	750.0	N 326 EC	
	280	58	4	4	560.0	629.0	NF 326	
	280	58	4	4	627.0	750.0	NF 326 EC	
	280	58	4	4	560.0	629.0	NJ 326	•
	280	58	4	4	627.0	750.0	NJ 326 EC	•
	280	58	4	4	560.0	629.0	NU 326	•
	280	58	4	4	627.0	750.0	NU 326 EC	•
	280	58	4	4	560.0	629.0	NUP 326	
	280	58	4	4	627.0	750.0	NUP 326 EC	
	280	93	4	4	885.0	1135.0	N 2326	•
	280	93	4	4	935.0	1250.0	N 2326 EC	•
	280	93	4	4	885.0	1135.0	NJ 2326	•
	280	93	4	4	935.0	1250.0	NJ 2326 EC	• •
	280	93	4	4	885.0	1135.0	NU 2326	•
	280	93	4	4	935.0	1250.0	NU 2326 EC	• •
	280	93	4	4	885.0	1135.0	NUP 2326	•
	280	93	4	4	935.0	1250.0	NUP 2326 EC	•
	340	78	5	5	884.0	987.0	N 426	
	340	78	5	5	884.0	987.0	NJ 426	•
	340	78	5	5	884.0	987.0	NU 426	•
	340	78	5	5	884.0	987.0	NUP 426	
140	210	33	2	1.1	172.0	245.0	N 1028	•
	210	33	2	1.1	172.0	245.0	NJ 1028	•
	210	33	2	1.1	172.0	245.0	NU 1028	•
	210	33	2	1.1	172.0	245.0	NUP 1028	•
	250	42	3	3	325.0	396.0	N 228	
	250	42	3	3	391.0	510.0	N 228 EC	
	250	42	3	3	325.0	396.0	NF 228	
	250	42	3	3	391.0	510.0	NF 228 EC	
	250	42	3	3	325.0	396.0	NJ 228	•
	250	42	3	3	391.0	510.0	NJ 228 EC	•
	250	42	3	3	325.0	396.0	NU 228	•
	250	42	3	3	391.0	510.0	NU 228 EC	•

Dimensions					Load Rating		AEC Bearing	M	Angle Ring
mm					kN				
d	D	B	r ₁	r	Dynamic (C)	Static (C ₀)			
	250	42	3	3	325.0	396.0	NUP 228		
	250	42	3	3	391.0	510.0	NUP 228 EC		
	250	68	3	3	488.0	669.0	N 2228	•	
	250	68	3	3	572.0	830.0	N 2228 EC	•	
	250	68	3	3	488.0	669.0	NJ 2228	•	
	250	68	3	3	572.0	830.0	NJ 2228 EC	•	•
	250	68	3	3	488.0	669.0	NU 2228	•	
	250	68	3	3	572.0	830.0	NU 2228 EC	•	•
	250	68	3	3	488.0	669.0	NUP 2228	•	
	250	68	3	3	572.0	830.0	NUP 2228 EC	•	
	300	62	4	4	617.0	702.0	N 328		
	300	62	4	4	682.0	830.0	N 328 EC		
	300	62	4	4	617.0	702.0	NF 328		
	300	62	4	4	682.0	830.0	NF 328 EC		
	300	62	4	4	617.0	702.0	NJ 328		•
	300	62	4	4	682.0	830.0	NJ 328 EC		•
	300	62	4	4	617.0	702.0	NU 328		•
	300	62	4	4	682.0	830.0	NU 328 EC		•
	300	62	4	4	617.0	702.0	NUP 328		
	300	62	4	4	682.0	830.0	NUP 328 EC		
	300	102	4	4	919.0	1170.0	N 2328	•	
	300	102	4	4	1050.0	1430.0	N 2328 EC	•	
	300	102	4	4	919.0	1170.0	NJ 2328	•	
	300	102	4	4	1050.0	1430.0	NJ 2328 EC	•	•
	300	102	4	4	919.0	1170.0	NU 2328	•	
	300	102	4	4	1050.0	1430.0	NU 2328 EC	•	•
	300	102	4	4	919.0	1170.0	NUP 2328	•	
	300	102	4	4	1050.0	1430.0	NUP 2328 EC	•	
	360	82	5	5	953.0	1076.0	N 428		
	360	82	5	5	953.0	1076.0	NJ 428		•
	360	82	5	5	953.0	1076.0	NU 428		•
	360	82	5	5	953.0	1076.0	NUP 428		
150	225	35	2.1	1.5	194.0	275.0	N 1030	•	
	225	35	2.1	1.5	194.0	275.0	NJ 1030	•	
	225	35	2.1	1.5	194.0	275.0	NU 1030	•	
	225	35	2.1	1.5	194.0	275.0	NUP 1030	•	
	270	45	3	3	391.0	490.0	N 230		
	270	45	3	3	446.0	600.0	N 230 EC		
	270	45	3	3	391.0	490.0	NF 230		
	270	45	3	3	446.0	600.0	NF 230 EC		
	270	45	3	3	391.0	490.0	NJ 230		•
	270	45	3	3	446.0	600.0	NJ 230 EC		•
	270	45	3	3	391.0	490.0	NU 230		•
	270	45	3	3	446.0	600.0	NU 230 EC		•
	270	45	3	3	391.0	490.0	NUP 230		
	270	45	3	3	446.0	600.0	NUP 230 EC		

Dimensions				Load Rating		AEC Bearing	M	Angle Ring
mm				kN				
d	D	B	r ₁	r	Dynamic (C)	Static (C ₀)		
	270	73	3	3	572.0	798.0	N 2230	•
	270	73	3	3	627.0	930.0	N 2230 EC	•
	270	73	3	3	572.0	798.0	NJ 2230	•
	270	73	3	3	627.0	930.0	NJ 2230 EC	• •
	270	73	3	3	572.0	798.0	NU 2230	•
	270	73	3	3	627.0	930.0	NU 2230 EC	• •
	270	73	3	3	572.0	798.0	NUP 2230	•
	270	73	3	3	627.0	930.0	NUP 2230 EC	•
	320	65	4	4	716.0	839.0	N 330	•
	320	65	4	4	781.0	965.0	N 330 EC	•
	320	65	4	4	716.0	839.0	NF 330	•
	320	65	4	4	781.0	965.0	NF 330 EC	•
	320	65	4	4	716.0	839.0	NJ 330	•
	320	65	4	4	781.0	965.0	NJ 330 EC	• •
	320	65	4	4	716.0	839.0	NU 330	•
	320	65	4	4	781.0	965.0	NU 330 EC	• •
	320	65	4	4	716.0	839.0	NUP 330	•
	320	65	4	4	781.0	965.0	NUP 330 EC	•
	320	108	4	4	1190.0	1630.0	NJ 2330 EC	• •
	320	108	4	4	1190.0	1630.0	NU 2330 EC	• •
	320	108	4	4	1190.0	1630.0	NUP 2330 EC	•
	380	85	5	5	1007.0	1171.0	N 430	•
	380	85	5	5	1007.0	1171.0	NJ 430	•
	380	85	5	5	1007.0	1171.0	NU 430	•
	380	85	5	5	1007.0	1171.0	NUP 430	•
160	240	38	2.1	1.5	229.0	325.0	N 1032	•
	240	38	2.1	1.5	229.0	325.0	NJ 1032	•
	240	38	2.1	1.5	229.0	325.0	NU 1032	•
	240	38	2.1	1.5	229.0	325.0	NUP 1032	•
	290	48	3	3	447.0	566.0	N 232	•
	290	48	3	3	501.0	680.0	N 232 EC	•
	290	48	3	3	447.0	566.0	NF 232	•
	290	48	3	3	501.0	680.0	NF 232 EC	•
	290	48	3	3	447.0	566.0	NJ 232	•
	290	48	3	3	501.0	680.0	NJ 232 EC	• •
	290	48	3	3	447.0	566.0	NU 232	•
	290	48	3	3	501.0	680.0	NU 232 EC	• •
	290	48	3	3	447.0	566.0	NUP 232	•
	290	48	3	3	501.0	680.0	NUP 232 EC	•
	290	80	3	3	661.0	937.0	N 2232	•
	290	80	3	3	809.0	1200.0	N 2232 EC	•
	290	80	3	3	661.0	937.0	NJ 2232	•
	290	80	3	3	809.0	1200.0	NJ 2232 EC	• •
	290	80	3	3	661.0	937.0	NU 2232	•
	290	80	3	3	809.0	1200.0	NU 2232 EC	• •
	290	80	3	3	661.0	937.0	NUP 2232	•

Dimensions					Load Rating		AEC Bearing	M	Angle Ring
mm					kN				
d	D	B	r ₁	r	Dynamic (C)	Static (C ₀)			
	290	80	3	3	809.0	1200.0	NUP 2232 EC	•	
	340	68	4	4	753.0	911.0	N 332	•	
	340	68	4	4	880.0	1080.0	N 332 EC	•	
	340	68	4	4	753.0	911.0	NF 332	•	
	340	68	4	4	880.0	1080.0	NF 332 EC	•	
	340	68	4	4	753.0	911.0	NJ 332	•	
	340	68	4	4	880.0	1080.0	NJ 332 EC	•	•
	340	68	4	4	753.0	911.0	NU 332	•	
	340	68	4	4	880.0	1080.0	NU 332 EC	•	•
	340	68	4	4	753.0	911.0	NUP 332	•	
	340	68	4	4	880.0	1080.0	NUP 332 EC	•	
	340	114	4	4	1320.0	1860.0	NJ 2332 E	•	•
	340	114	4	4	1320.0	1860.0	NU 2332 E	•	•
	340	114	4	4	1320.0	1860.0	NUP 2332 E	•	
170	260	42	2.1	2.1	275.0	400.0	N 1034	•	
	260	42	2.1	2.1	275.0	400.0	NJ 1034	•	•
	260	42	2.1	2.1	275.0	400.0	NU 1034	•	•
	260	42	2.1	2.1	275.0	400.0	NUP 1034	•	
	310	52	4	4	506.0	648.0	N 234	•	
	310	52	4	4	616.0	815.0	N 234 E	•	
	310	52	4	4	506.0	648.0	NF 234	•	
	310	52	4	4	616.0	815.0	NF 234 E	•	
	310	52	4	4	506.0	648.0	NJ 234	•	
	310	52	4	4	616.0	815.0	NJ 234 E	•	•
	310	52	4	4	506.0	648.0	NU 234	•	
	310	52	4	4	616.0	815.0	NU 234 E	•	•
	310	52	4	4	506.0	648.0	NUP 234	•	
	310	52	4	4	616.0	815.0	NUP 234 E	•	
	310	86	4	4	757.0	1087.0	N 2234	•	
	310	86	4	4	968.0	1430.0	N 2234 E	•	
	310	86	4	4	757.0	1087.0	NJ 2234	•	
	310	86	4	4	968.0	1430.0	NJ 2234 E	•	•
	310	86	4	4	757.0	1087.0	NU 2234	•	
	310	86	4	4	968.0	1430.0	NU 2234 E	•	•
	310	86	4	4	757.0	1087.0	NUP 2234	•	
	310	86	4	4	968.0	1430.0	NUP 2234 E	•	
	360	72	4	4	952.0	1040.0	N 334 E		
	360	72	4	4	952.0	1040.0	NF 334 E		
	360	72	4	4	952.0	1040.0	NJ 334 E		•
	360	72	4	4	952.0	1040.0	NU 334 E		•
	360	72	4	4	952.0	1040.0	NUP 334 E		
	360	126	4	4	1230.0	1800.0	NJ 2334	•	•
	360	126	4	4	1230.0	1800.0	NU 2334	•	•
	360	126	4	4	1230.0	1800.0	NUP 2334	•	
180	280	46	2.1	2.1	336.0	475.0	N 1036	•	

Dimensions					Load Rating		AEC Bearing	M	Angle Ring
mm					kN				
d	D	B	r ₁	r	Dynamic (C)	Static (C ₀)			
	280	46	2.1	2.1	336.0	475.0	NJ 1036	•	•
	280	46	2.1	2.1	336.0	475.0	NU 1036	•	•
	280	46	2.1	2.1	336.0	475.0	NUP 1036	•	
	320	52	4	4	525.0	688.0	N 236	•	
	320	52	4	4	627.0	850.0	N 236 EC	•	
	320	52	4	4	525.0	688.0	NF 236	•	
	320	52	4	4	627.0	850.0	NF 236 EC	•	
	320	52	4	4	525.0	688.0	NJ 236	•	
	320	52	4	4	627.0	850.0	NJ 236 EC	•	•
	320	52	4	4	525.0	688.0	NU 236	•	
	320	52	4	4	627.0	850.0	NU 236 EC	•	•
	320	52	4	4	525.0	688.0	NUP 236	•	
	320	52	4	4	627.0	850.0	NUP 236 EC	•	
	320	86	4	4	785.0	1155.0	N 2236	•	
	320	86	4	4	1010.0	1500.0	N 2236 EC	•	
	320	86	4	4	785.0	1155.0	NJ 2236	•	
	320	86	4	4	1010.0	1500.0	NJ 2236 EC	•	•
	320	86	4	4	785.0	1155.0	NU 2236	•	
	320	86	4	4	1010.0	1500.0	NU 2236 EC	•	•
	320	86	4	4	785.0	1155.0	NUP 2236	•	
	320	86	4	4	1010.0	1500.0	NUP 2236 EC	•	
	380	75	4	4	913.0	1180.0	N 336	•	
	380	75	4	4	913.0	1180.0	NF 336	•	
	380	75	4	4	913.0	1180.0	NJ 336	•	•
	380	75	4	4	913.0	1180.0	NU 336	•	•
	380	75	4	4	913.0	1180.0	NUP 336	•	
	380	126	4	4	1400.0	2040.0	NJ 2336	•	•
	380	126	4	4	1400.0	2040.0	NU 2336	•	•
	380	126	4	4	1400.0	2040.0	NUP 2336	•	
190	290	46	2.1	2.1	347.0	500.0	N 1038	•	
	290	46	2.1	2.1	347.0	500.0	NJ 1038	•	•
	290	46	2.1	2.1	347.0	500.0	NU 1038	•	•
	290	46	2.1	2.1	347.0	500.0	NUP 1038	•	
	340	55	4	4	582.0	768.0	N 238	•	
	340	55	4	4	693.0	965.0	N 238 EC	•	
	340	55	4	4	582.0	768.0	NJ 238	•	
	340	55	4	4	693.0	965.0	NJ 238 EC	•	•
	340	55	4	4	582.0	768.0	NU 238	•	
	340	55	4	4	693.0	965.0	NU 238 EC	•	•
	340	55	4	4	582.0	768.0	NUP 238	•	
	340	55	4	4	693.0	965.0	NUP 238 EC	•	
	340	92	4	4	871.0	1288.0	N 2238	•	
	340	92	4	4	1100.0	1660.0	N 2238 EC	•	
	340	92	4	4	871.0	1288.0	NJ 2238	•	
	340	92	4	4	1100.0	1660.0	NJ 2238 EC	•	•
	340	92	4	4	871.0	1288.0	NU 2238	•	

Dimensions					Load Rating		AEC Bearing	M	Angle Ring
mm					kN				
d	D	B	r ₁	r	Dynamic (C)	Static (C ₀)			
	340	92	4	4	1100.0	1660.0	NU 2238 EC	•	•
	340	92	4	4	871.0	1288.0	NUP 2238	•	
	340	92	4	4	1100.0	1660.0	NUP 2238 EC	•	
	400	78	4	4	920.0	1288.0	N 338	•	
	400	78	4	4	1140.0	1500.0	N 338 EC	•	
	400	78	4	4	920.0	1288.0	NJ 338	•	
	400	78	4	4	1140.0	1500.0	NJ 338 EC	•	•
	400	78	4	4	920.0	1288.0	NU 338	•	
	400	78	4	4	1140.0	1500.0	NU 338 EC	•	•
	400	78	4	4	920.0	1288.0	NUP 338	•	
	400	78	4	4	1140.0	1500.0	NUP 338 EC	•	
	400	132	4	4	1830.0	2550.0	NJ 2338 EC	•	
	400	132	4	4	1830.0	2550.0	NU 2338 EC	•	
	400	132	4	4	1830.0	2550.0	NUP 2338 EC	•	
200	310	51	2.1	2.1	380.0	570.0	N 1040	•	
	310	51	2.1	2.1	380.0	570.0	NJ 1040	•	•
	310	51	2.1	2.1	380.0	570.0	NU 1040	•	•
	310	51	2.1	2.1	380.0	570.0	NUP 1040	•	
	360	58	4	4	650.0	865.0	N 240	•	
	360	58	4	4	765.0	1060.0	N 240 E	•	
	360	58	4	4	650.0	865.0	NJ 240	•	
	360	58	4	4	765.0	1060.0	NJ 240 E	•	•
	360	58	4	4	650.0	865.0	NU 240	•	
	360	58	4	4	765.0	1060.0	NU 240 E	•	•
	360	58	4	4	650.0	865.0	NUP 240	•	
	360	58	4	4	765.0	1060.0	NUP 240 E	•	
	360	98	4	4	967.0	1442.0	N 2240	•	
	360	98	4	4	1230.0	1900.0	N 2240 EC	•	
	360	98	4	4	967.0	1442.0	NJ 2240	•	
	360	98	4	4	1230.0	1900.0	NJ 2240 EC	•	•
	360	98	4	4	967.0	1442.0	NU 2240	•	
	360	98	4	4	1230.0	1900.0	NU 2240 EC	•	•
	360	98	4	4	967.0	1442.0	NUP 2240	•	
	360	98	4	4	1230.0	1900.0	NUP 2240 EC	•	
	420	80	5	5	990.0	1320.0	N 340	•	
	420	80	5	5	990.0	1320.0	NJ 340	•	•
	420	80	5	5	990.0	1320.0	NU 340	•	•
	420	80	5	5	990.0	1320.0	NUP 340	•	
	420	138	5	5	2050.0	2850.0	NJ 2340 EC	•	
	420	138	5	5	2050.0	2850.0	NU 2340 EC	•	
	420	138	5	5	2050.0	2850.0	NUP 2340 EC	•	
220	340	56	3	3	495.0	735.0	N 1044	•	
	340	56	3	3	495.0	735.0	NJ 1044	•	•
	340	56	3	3	495.0	735.0	NU 1044	•	•
	340	56	3	3	495.0	735.0	NUP 1044	•	

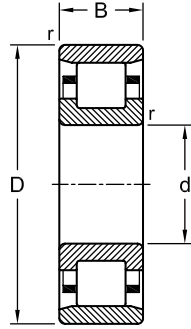
Dimensions				Load Rating		AEC Bearing	M	Angle Ring
mm				kN				
d	D	B	r ₁	r	Dynamic (C)	Static (C ₀)		
	400	65	4	4	765.0	1080.0	N 244	•
	400	65	4	4	765.0	1080.0	NJ 244	• •
	400	65	4	4	765.0	1080.0	NU 244	• •
	400	65	4	4	765.0	1080.0	NUP 244	•
	400	108	4	4	1189.0	1806.0	N 2244	•
	400	108	4	4	1570.0	2280.0	N 2244 EC	•
	400	108	4	4	1189.0	1806.0	NJ 2244	•
	400	108	4	4	1570.0	2280.0	NJ 2244 EC	• •
	400	108	4	4	1189.0	1806.0	NU 2244	•
	400	108	4	4	1570.0	2280.0	NU 2244 EC	• •
	400	108	4	4	1189.0	1806.0	NUP 2244	•
	400	108	4	4	1570.0	2280.0	NUP 2244 EC	•
	460	88	5	5	1210.0	1630.0	NJ 344	• •
	460	88	5	5	1210.0	1630.0	NU 344	• •
	460	88	5	5	1210.0	1630.0	NUP 344	•
	460	145	5	5	2330.0	3250.0	NJ 2344 EC	• •
	460	145	5	5	2330.0	3250.0	NU 2344 EC	• •
	460	145	5	5	2330.0	3250.0	NUP 2344 EC	•
240	360	560	3	3	523.0	800.0	N 1048	•
	360	560	3	3	523.0	800.0	NJ 1048	• •
	360	560	3	3	523.0	800.0	NU 1048	• •
	360	560	3	3	523.0	800.0	NUP 1048	•
	440	72	4	4	952.0	1370.0	N 248	•
	440	72	4	4	952.0	1370.0	NJ 248	• •
	440	72	4	4	952.0	1370.0	NU 248	• •
	440	72	4	4	952.0	1370.0	NUP 248	•
	440	120	4	4	1450.0	2360.0	N 2248	•
	440	120	4	4	1450.0	2360.0	NJ 2248	• •
	440	120	4	4	1450.0	2360.0	NU 2248	• •
	440	120	4	4	1450.0	2360.0	NUP 2248	•
	500	95	5	5	1450.0	2000.0	NJ 348	• •
	500	95	5	5	1450.0	2000.0	NU 348	• •
	500	95	5	5	1450.0	2000.0	NUP 348	•
	500	155	5	5	2120.0	3250.0	NJ 2348	• •
	500	155	5	5	2120.0	3250.0	NU 2348	• •
	500	155	5	5	2120.0	3250.0	NUP 2348	•
260	400	65	4	4	627.0	965.0	N 1052	•
	400	65	4	4	627.0	965.0	NJ 1052	• •
	400	65	4	4	627.0	965.0	NU 1052	• •
	400	65	4	4	627.0	965.0	NUP 1052	•
	480	80	5	5	1170.0	1700.0	N 252	•
	480	80	5	5	1170.0	1700.0	NJ 252	• •
	480	80	5	5	1170.0	1700.0	NU 252	• •
	480	80	5	5	1170.0	1700.0	NUP 252	•

Dimensions				Load Rating		AEC Bearing	M	Angle Ring	
mm				kN					
d	D	B	r ₁	r	Dynamic (C)	Static (C ₀)			
280	480	130	5	5	1790.0	3000.0	NU 2252	•	•
	420	65	4	4	660.0	1060.0	N 1056	•	
	420	65	4	4	660.0	1060.0	NJ 1056	•	
	420	65	4	4	660.0	1060.0	NU 1056	•	
	420	65	4	4	660.0	1060.0	NUP 1056	•	
300	500	80	5	5	1140.0	1700.0	NJ 256	•	•
	500	80	5	5	1140.0	1700.0	NU 256	•	•
	500	130	5	5	2200.0	3250.0	NU 2256 EC	•	•
	580	175	6	6	2700.0	4300.0	NU 2356	•	•
	460	74	4	4	858.0	1370.0	N 1060	•	
320	460	74	4	4	858.0	1370.0	NJ 1060	•	•
	460	74	4	4	858.0	1370.0	NU 1060	•	•
	460	74	4	4	858.0	1370.0	NUP 1060	•	
	540	85	5	5	1420.0	2120.0	NU 260	•	•
	540	140	5	5	2090.0	3450.0	NU 2260	•	•
340	480	74	4	4	880.0	1430.0	N 1064		
	480	74	4	4	880.0	1430.0	NJ 1064	•	•
	480	74	4	4	880.0	1430.0	NU 1064	•	•
	480	74	4	4	880.0	1430.0	NUP 1064	•	
	580	92	5	5	1610.0	2450.0	NU 264	•	•
360	580	150	5	5	2380.0	4000.0	NU 2264	•	•
	520	82	5	5	1080.0	1760.0	N 1068	•	
	520	82	5	5	1080.0	1760.0	NJ 1068	•	•
	520	82	5	5	1080.0	1760.0	NU 1068	•	•
	520	82	5	5	1080.0	1760.0	NUP 1068	•	
380	620	165	6	6	2640.0	4500.0	NU 2268	•	
	540	82	5	5	1100.0	1830.0	NU 1072	•	•
400	650	170	6	6	2920.0	4900.0	NU 2272	•	
	560	82	5	5	1140.0	1930.0	NU 1076	•	•
420	680	175	6	6	3140.0	5500.0	NU 2276	•	
	600	90	5	5	1380.0	2320.0	NU 1080	•	•
440	620	90	5	5	1420.0	2450.0	NU 1084	•	•
460	650	94	6	6	1510.0	2650.0	NU 1088	•	•
480	680	100	6	6	1650.0	2850.0	NU 1092	•	•
500	700	100	6	6	1680.0	3000.0	NU 1096	•	•
530	720	100	6	6	1720.0	3100.0	NU 10/500	•	•
560	780	112	6	6	2290.0	4050.0	NU 10/530	•	
600	820	115	6	6	2330.0	4250.0	NU 10/560	•	
600	870	118	6	6	2750.0	5100.0	NU 10/600	•	

Cylindrical Roller Bearings

Single Row
Inch Series

CFL, CRL, CRM, LLRJ, MMRJ, XLRJ



CRL / CRM / XLRJ



LLRJ / MMRJ



CFL

Dimensions				Load Rating		AEC Bearing	M
inch (mm)				kN			
d	D	B	r	Dynamic (C)	Static (C ₀)		
0.500	1.3125	0.3750	0.0315 (0.8)	9.85	6.95	CRL 4	
	1.3125	0.3750	0.0315 (0.8)	9.85	6.95	LLRJ 1/2	
	1.6250	0.6250	0.0630 (1.6)	17.10	12.80	CRM 4	
	1.6250	0.6250	0.0630 (1.6)	17.10	12.80	MMRJ 1/2	
0.625	1.5625	0.4375	0.0315 (0.8)	12.50	9.95	CFL 5	
	1.5625	0.4375	0.0315 (0.8)	12.50	9.95	CRL 5	
	1.5625	0.4375	0.0315 (0.8)	12.50	9.95	LLRJ 5/8	
	1.8125	0.6250	0.0630 (1.6)	18.80	14.80	CRM 5	
	1.8125	0.6250	0.0630 (1.6)	18.80	14.80	MMRJ 5/8	
0.750	1.8750	0.5625	0.0630 (1.6)	22.80	19.40	CFL 6	
	1.8750	0.5625	0.0630 (1.6)	22.80	19.40	CRL 6	•
	1.8750	0.5625	0.0630 (1.6)	22.80	19.40	LLRJ 3/4	
	2.0000	0.6875	0.0630 (1.6)	28.70	24.30	CRM 6	
	2.0000	0.6875	0.0630 (1.6)	28.70	24.30	MMRJ 3/4	
0.875	2.0000	0.5625	0.0630 (1.6)	24.60	20.80	CFL 7	
	2.0000	0.5625	0.0630 (1.6)	24.60	20.80	CRL 7	
	2.0000	0.5625	0.0630 (1.6)	24.60	20.80	LLRJ 7/8	
	2.2500	0.6875	0.0630 (1.6)	25.10	21.10	CRM 7	
	2.2500	0.6875	0.0630 (1.6)	25.10	21.10	MMRJ 7/8	
1.000	2.2500	0.6250	0.0630 (1.6)	31.10	27.90	CFL 8	
	2.2500	0.6250	0.0630 (1.6)	31.10	27.90	CRL 8	
	2.2500	0.6250	0.0630 (1.6)	31.10	27.90	LLRJ 1	
	2.5000	0.7500	0.0945 (2.4)	35.00	30.60	CFM 8	
	2.5000	0.7500	0.0945 (2.4)	35.00	30.60	CRM 8	
1.125	2.5000	0.7500	0.0945 (2.4)	35.00	30.60	MMRJ 1	
	2.5000	0.6250	0.0630 (1.6)	33.10	31.30	CFL 9	
	2.5000	0.6250	0.0630 (1.6)	33.10	31.30	CRL 9	
	2.5000	0.6250	0.0630 (1.6)	33.10	31.30	LLRJ 1.1/8	
	2.8125	0.8125	0.0945 (2.4)	45.50	41.90	CFM 9	
1.250	2.8125	0.8125	0.0945 (2.4)	45.50	41.90	CRM 9	•
	2.8125	0.8125	0.0945 (2.4)	45.50	41.90	MMRJ 1.1/8	
	2.7500	0.6875	0.0630 (1.6)	42.10	37.90	CFL 10	

Dimensions				Load Rating		AEC Bearing	M
inch (mm)				kN			
d	D	B	r	Dynamic (C)	Static (C ₀)		
1.375	2.7500	0.6875	0.0630 (1.6)	42.10	37.90	CRL 10	
	2.7500	0.6875	0.0630 (1.6)	42.10	37.90	LLRJ 1.1/4	
	3.1250	0.8750	0.0945 (2.4)	58.00	52.50	CFM 10	
	3.1250	0.8750	0.0945 (2.4)	58.00	52.50	CRM 10	
	3.1250	0.8750	0.0945 (2.4)	58.00	52.50	MMRJ 1.1/4	
	3.0000	0.6875	0.0630 (1.6)	42.10	38.30	CFL 11	
	3.0000	0.6875	0.0630 (1.6)	42.10	38.30	CRL 11	
	3.0000	0.6875	0.0630 (1.6)	42.10	38.30	LLRJ 1.3/8	
1.500	3.5000	0.8750	0.0945 (2.4)	66.00	57.50	CRM 11	
	3.5000	0.8750	0.0945 (2.4)	66.00	57.50	MMRJ 1.3/8	
	2.6875	0.5625	0.0630 (1.6)	23.30	2.43	XLRJ 1.1/2	
	3.2500	0.7500	0.0945 (2.4)	54.00	48.80	CFL 12	
	3.2500	0.7500	0.0945 (2.4)	54.00	48.80	CRL 12	
	3.2500	0.7500	0.0945 (2.4)	54.00	48.80	LLRJ 1.1/2	
	3.7500	0.9375	0.0945 (2.4)	72.50	68.50	CFM 12	
	3.7500	0.9375	0.0945 (2.4)	72.50	68.50	CRM 12	
1.625	3.7500	0.9375	0.0945 (2.4)	72.50	68.50	MMRJ 1.1/2	
	2.8750	0.5625	0.0630 (1.6)	24.00	25.90	XLRJ 1.5/8	
	3.5000	0.7500	0.0945 (2.4)	57.50	54.00	CRL 13	
	3.5000	0.7500	0.0945 (2.4)	57.50	54.00	LLRJ 1.5/8	
	4.0000	0.9375	0.0945 (2.4)	85.50	83.00	CRM 13	
	4.0000	0.9375	0.0945 (2.4)	85.50	83.00	MMRJ 1.5/8	
	3.0000	0.5625	0.0630 (1.6)	24.70	27.50	XLRJ 1.3/4	
	3.7500	0.8125	0.0945 (2.4)	68.00	63.00	CFL 14	
1.750	3.7500	0.8125	0.0945 (2.4)	68.00	63.00	CRL 14	
	3.7500	0.8125	0.0945 (2.4)	68.00	63.00	LLRJ 1.3/4	
	4.2500	1.0625	0.0945 (2.4)	98.50	93.00	CFM 14	
	4.2500	1.0625	0.0945 (2.4)	98.50	93.00	CRM 14	
	4.2500	1.0625	0.0945 (2.4)	98.50	93.00	MMRJ 1.3/4	
	3.1875	0.6250	0.0630 (1.6)	34.00	35.80	XLRJ 1.7/8	
	4.0000	0.8125	0.0945 (2.4)	72.00	79.00	CRL 15	
	4.0000	0.8125	0.0945 (2.4)	72.00	79.00	LLRJ 1.7/8	
2.000	4.5000	1.0625	0.0945 (2.4)	98.50	94.50	CRM 15	•
	4.5000	1.0625	0.0945 (2.4)	98.50	94.50	MMRJ 1.7/8	
	3.3125	0.6250	0.0630 (1.6)	35.30	38.20	XLRJ 2	
	4.0000	0.8125	0.0945 (2.4)	72.00	79.00	CFL 16	
	4.0000	0.8125	0.0945 (2.4)	72.00	79.00	CRL 16	
	4.0000	0.8125	0.0945 (2.4)	72.00	79.00	LLRJ 2	
	4.5000	1.0625	0.0945 (2.4)	98.50	94.50	CFM 16	
	4.5000	1.0625	0.0945 (2.4)	98.50	94.50	CRM 16	•
2.250	4.5000	1.0625	0.0945 (2.4)	98.50	94.50	MMRJ 2	
	3.5625	0.6250	0.0630 (1.6)	39.10	45.00	XLRJ 2.1/4	
	4.5000	0.8750	0.0945 (2.4)	87.50	89.50	CFL 18	
	4.5000	0.8750	0.0945 (2.4)	87.50	89.50	CRL 18	•
	4.5000	0.8750	0.0945 (2.4)	87.50	89.50	LLRJ 2.1/4	
	5.0000	1.2500	0.1260 (3.2)	136.00	138.00	CFM 18	
	5.0000	1.2500	0.1260 (3.2)	136.00	138.00	CRM 18	
	5.0000	1.2500	0.1260 (3.2)	136.00	138.00	MMRJ 2.1/4	

Dimensions				Load Rating		AEC Bearing	M
inch (mm)				kN			
d	D	B	r	Dynamic (C)	Static (C ₀)		
2.500	3.8750	0.6875	0.0630 (1.6)	42.60	52.00	XLRJ 2.1/2	
	5.0000	0.9375	0.0945 (2.4)	102.00	114.00	CFL 20	
	5.0000	0.9375	0.0945 (2.4)	102.00	114.00	CRL 20	
	5.0000	0.9375	0.0945 (2.4)	102.00	114.00	LLRJ 2.1/2	
	5.5000	1.2500	0.1260 (3.2)	164.00	167.00	CFM 20	
	5.5000	1.2500	0.1260 (3.2)	164.00	167.00	CRM 20	•
	5.5000	1.2500	0.1260 (3.2)	164.00	167.00	MMRJ 2.1/2	
2.750	4.1250	0.6875	0.0630 (1.6)	42.10	52.50	XLRJ 2.3/4	
	5.2500	0.9375	0.0945 (2.4)	107.00	122.00	CFL 22	
	5.2500	0.9375	0.0945 (2.4)	107.00	122.00	CRL 22	
	5.2500	0.9375	0.0945 (2.4)	107.00	122.00	LLRJ 2.3/4	
	6.2500	1.3750	0.1260 (3.2)	205.00	216.00	CFM 22	
	6.2500	1.3750	0.1260 (3.2)	205.00	216.00	CRM 22	•
	6.2500	1.3750	0.1260 (3.2)	205.00	216.00	MMRJ 2.3/4	
3.000	4.5000	0.7500	0.0945 (2.4)	56.00	68.50	XLRJ 3	•
	5.7500	1.0625	0.0945 (2.4)	139.00	147.00	CFL 24	
	5.7500	1.0625	0.0945 (2.4)	139.00	147.00	CRL 24	
	5.7500	1.0625	0.0945 (2.4)	139.00	147.00	LLRJ 3	
	7.0000	1.5625	0.1575 (4)	234.00	248.00	CFM 24	
	7.0000	1.5625	0.1575 (4)	234.00	248.00	CRM 24	
	7.0000	1.5625	0.1575 (4)	234.00	248.00	MMRJ 3	
3.250	4.7500	0.7500	0.0945 (2.4)	59.50	75.00	XLRJ 3.1/4	•
	6.0000	1.0625	0.0945 (2.4)	151.00	172.00	CFL 26	•
	6.0000	1.0625	0.0945 (2.4)	151.00	172.00	CRL 26	•
	6.0000	1.0625	0.0945 (2.4)	151.00	172.00	LLRJ 3.1/4	•
	7.5000	1.5625	0.1575 (4)	263.00	285.00	CRM 26	•
	7.5000	1.5625	0.1575 (4)	263.00	285.00	MMRJ 3.1/4	•
	7.5000	1.5625	0.1575 (4)	263.00	285.00	CRM 27	•
	7.5000	1.5625	0.1575 (4)	263.00	285.00	MMRJ 3.3/8	•
3.500	5.0000	0.7500	0.0945 (2.4)	60.50	78.50	XLRJ 3.1/2	•
	5.0000	0.7500	0.0945 (2.4)	60.50	78.50	XLRJA 3.1/2	•
	6.5000	1.1250	0.1260 (3.2)	168.00	189.00	CFL 28	•
	6.5000	1.1250	0.1260 (3.2)	168.00	189.00	CRL 28	•
	6.5000	1.1250	0.1260 (3.2)	168.00	189.00	LLRJ 3.1/2	•
	8.1250	1.7500	0.1575 (4)	276.00	311.00	CRM 28	•
	8.1250	1.7500	0.1575 (4)	276.00	311.00	MMRJ 3.1/2	•
	5.2500	0.7500	0.0945 (2.4)	62.00	82.50	XLRJ 3.3/4	•
	6.7500	1.1250	0.1260 (3.2)	192.00	230.00	CRL 30	•
	6.7500	1.1250	0.1260 (3.2)	192.00	230.00	LLRJ 3.3/4	•
	8.2500	1.7500	0.1575 (4)	276.00	311.00	CRM 30	•
	8.2500	1.7500	0.1575 (4)	276.00	311.00	MMRJ 3.3/4	•
4.000	5.6250	0.8750	0.0945 (2.4)	80.00	105.00	XLRJ 4	•
	7.2500	1.2500	0.1260 (3.2)	173.00	219.00	CFL 32	•
	7.2500	1.2500	0.1260 (3.2)	173.00	219.00	CRL 32	•
	7.2500	1.2500	0.1260 (3.2)	302.00	359.00	LLRJ 4	•
	8.5000	1.7500	0.1575 (4)	302.00	359.00	CRM 32	•
	8.5000	1.7500	0.1575 (4)	302.00	359.00	MMRJ 4	•
	8.5000	1.7500	0.1575 (4)	302.00	359.00	MMRJ 4	•
4.250	6.0000	0.8750	0.0945 (2.4)	84.00	114.00	XLRJ 4.1/4	•

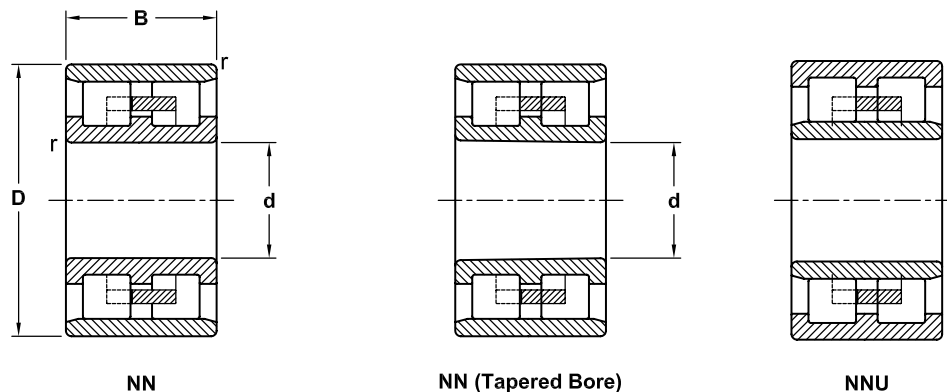
Dimensions				Load Rating		AEC Bearing	M
inch (mm)				kN			
d	D	B	r	Dynamic (C)	Static (C ₀)		
4.500	7.5000	1.2500	0.1260 (3.2)	222.00	270.00	CRL 34	•
	7.5000	1.2500	0.1260 (3.2)	222.00	270.00	LLRJ 4.1/4	•
	8.7500	1.7500	0.1890 (4.8)	302.00	359.00	CRM 34	•
	8.7500	1.7500	0.1890 (4.8)	302.00	359.00	MMRJ 4.1/4	•
	6.2500	0.8750	0.0945 (2.4)	80.00	124.00	XLRJ 4.1/2	•
	8.0000	1.3125	0.1260 (3.2)	229.00	288.00	CRL 36	•
	8.0000	1.3125	0.1260 (3.2)	229.00	288.00	LLRJ 4.1/2	•
	9.3750	2.0000	0.1890 (4.8)	417.00	478.00	CRM 36	•
4.750	9.3750	2.0000	0.1890 (4.8)	417.00	478.00	MMRJ 4.1/2	•
	6.5000	0.8750	0.0945 (2.4)	92.00	133.00	XLRJ 4.3/4	•
	8.2500	1.3125	0.1260 (3.2)	264.00	331.00	CRL 38	•
	8.2500	1.3125	0.1260 (3.2)	264.00	331.00	LLRJ 4.3/4	•
5.000	10.0000	2.0000	0.1890 (4.8)	478.00	568.00	CRM 38	•
	10.0000	2.0000	0.1890 (4.8)	478.00	568.00	MMRJ 4.3/4	•
	7.0000	1.0000	0.0945 (2.4)	113.00	161.00	XLRJ 5	•
	9.0000	1.3750	0.1260 (3.2)	281.00	369.00	CRL 40	•
5.250	9.0000	1.3750	0.1260 (3.2)	281.00	369.00	LLRJ 5	•
	10.0000	2.0000	0.1890 (4.8)	478.00	568.00	CRM 40	•
	10.0000	2.0000	0.1890 (4.8)	478.00	568.00	MMRJ 5	•
	7.2500	1.0000	0.0945 (2.4)	112.00	161.00	XLRJ 5.1/4	•
5.500	7.5000	1.0000	0.0945 (2.4)	117.00	174.00	XLRJ 5.1/2	•
	9.5000	1.3750	0.1260 (3.2)	288.00	389.00	CRL 44	•
5.750	9.5000	1.3750	0.1260 (3.2)	288.00	389.00	LLRJ 5.1/2	•
	11.0000	2.0000	0.1890 (4.8)	545.00	668.00	CRM 44	•
	11.0000	2.0000	0.1890 (4.8)	545.00	668.00	MMRJ 5.1/2	•
	7.7500	1.0000	0.0945 (2.4)	122.00	186.00	XLRJ 5.3/4	•
6.000	8.0000	1.0000	0.0945 (2.4)	127.00	198.00	XLRJ 6	•
	10.5000	1.5625	0.1575 (4)	325.00	450.00	CRL 48	•
6.500	10.5000	1.5625	0.1575 (4)	325.00	450.00	LLRJ 6	•
	12.0000	2.2500	0.1890 (4.8)	640.00	795.00	CRM 48	•
	12.0000	2.2500	0.1890 (4.8)	640.00	795.00	MMRJ 6	•
	8.7500	1.1250	0.1260 (3.2)	131.00	211.00	XLRJ 6.1/2	•
7.000	11.0000	1.5625	0.1575 (4)	369.00	471.00	CRL 52	•
	11.0000	1.5625	0.1575 (4)	369.00	471.00	LLRJ 6.1/2	•
	13.0000	2.5000	0.1890 (4.8)	749.00	940.00	CRM 52	•
	13.0000	2.5000	0.1890 (4.8)	749.00	940.00	MMRJ 6.1/2	•
7.500	9.5000	1.2500	0.1260 (3.2)	194.00	307.00	XLRJ 7	•
	12.0000	1.7500	0.1575 (4)	477.00	645.00	CRL 56	•
	12.0000	1.7500	0.1575 (4)	477.00	645.00	LLRJ 7	•
	13.5000	2.5000	0.1890 (4.8)	747.00	950.00	CRM 56	•
8.000	10.0000	1.2500	0.1260 (3.2)	200.00	327.00	XLRJ 7.1/2	•
	12.5000	1.7500	0.1575 (4)	508.00	712.00	CRL 60	•
	12.5000	1.7500	0.1575 (4)	508.00	712.00	LLRJ 7.1/2	•
	14.5079	2.7500	0.1890 (4.8)	838.00	1100.00	CRM 60	•
8.000	10.7500	1.3750	0.1260 (3.2)	230.00	373.00	XLRJ 8	•
	13.0000	1.7500	0.1575 (4)	537.00	779.00	CRL 64	•
	13.0000	1.7500	0.1575 (4)	537.00	779.00	LLRJ 8	•
	15.0000	2.7500	0.1890 (4.8)	870.00	1170.00	CRM 64	•

Dimensions				Load Rating		AEC Bearing	M
inch (mm)				kN			
d	D	B	r	Dynamic (C)	Static (C ₀)		
8.500	11.5000	1.5000	0.1260 (3.2)	259.00	417.00	XLRJ 8.1/2	•
	14.0000	2.0000	0.1890 (4.8)	531.00	786.00	CRL 68	•
	14.0000	2.0000	0.1890 (4.8)	531.00	786.00	LLRJ 8.1/2	•
	16.0000	3.0000	0.1890 (4.8)	959.00	1280.00	CRM 68	•
9.000	12.0000	1.5000	0.1260 (3.2)	269.00	445.00	XLRJ 9	•
	14.5000	2.0000	0.1890 (4.8)	644.00	952.00	CRL 72	•
	14.5000	2.0000	0.1890 (4.8)	644.00	952.00	LLRJ 9	•
	17.0000	3.0000	0.1890 (4.8)	1065.00	1460.00	CRM 72	•
9.500	12.7500	1.6250	0.1575 (4)	313.00	521.00	XLRJ 9.1/2	•
	15.1250	2.0000	0.1890 (4.8)	556.00	856.00	CRL 76	•
	15.1250	2.0000	0.1890 (4.8)	556.00	856.00	LLRJ 9.1/2	•
	18.0000	3.2500	0.1890 (4.8)	1230.00	1640.00	CRM 76	•
10.000	13.2500	1.6250	0.1575 (4)	310.00	523.00	XLRJ 10	•
	15.7500	2.0000	0.1890 (4.8)	674.00	1040.00	CRL 80	•
	15.7500	2.0000	0.1890 (4.8)	674.00	1040.00	LLRJ 10	•
	18.5000	3.0000	0.1890 (4.8)	1190.00	1650.00	CRM 80	•
10.500	14.0000	1.7500	0.1575 (4)	373.00	640.00	XLRJ 10.1/2	•
	16.6250	2.2500	0.1890 (4.8)	671.00	1020.00	CRL 84	•
	16.6250	2.2500	0.1890 (4.8)	671.00	1020.00	LLRJ 10.1/2	•
	19.5000	3.5000	0.25 (6.35)	1330.00	1870.00	CRM 84	•
11.000	14.5000	1.7500	0.1575 (4)	386.00	678.00	XLRJ 11	•
	17.5000	2.2500	0.1890 (4.8)	706.00	1110.00	CRL 88	•
	17.5000	2.2500	0.1890 (4.8)	706.00	1110.00	LLRJ 11	•
	20.0000	3.5000	0.25 (6.35)	1330.00	1880.00	CRM 88	•
11.500	15.2500	1.8750	0.1575 (4)	423.00	736.00	XLRJ 11.1/2	•
	18.0000	2.3437	0.1890 (4.8)	839.00	1310.00	CRL 92	•
12.000	16.0000	2.0000	0.1890 (4.8)	477.00	836.00	XLRJ 12	•
	18.5000	2.6250	0.1890 (4.8)	858.00	136.00	CRL 96	•
	18.5000	2.6250	0.1890 (4.8)	858.00	136.00	LLRJ 12	•
	21.5000	3.7500	0.25 (6.35)	1720.00	2480.00	CRM 96	•
13.000	17.5000	2.2500	0.1890 (4.8)	571.00	993.00	XLRJ 13	•
	20.0000	2.7500	0.1890 (4.8)	1030.00	1680.00	CRL 104	•
	20.0000	2.7500	0.1890 (4.8)	1030.00	1680.00	LLRJ 13	•
14.000	18.5000	2.2500	0.1890 (4.8)	564.00	998.00	XLRJ 14	•
	21.5000	2.8750	0.1890 (4.8)	1140.00	1960.00	CRL 112	•
	21.5000	2.8750	0.1890 (4.8)	1140.00	1960.00	LLRJ 14	•
15.0000	20.0000	2.5000	0.1890 (4.8)	705.00	1260.00	XLRJ 15	•
	22.5000	3.0000	0.1890 (4.8)	1220.00	1940.00	CRL 120	•
	22.5000	3.0000	0.1890 (4.8)	1220.00	1940.00	LLRJ 15	•

Cylindrical Roller Bearings

Double Row
Metric Series

NN, NNU



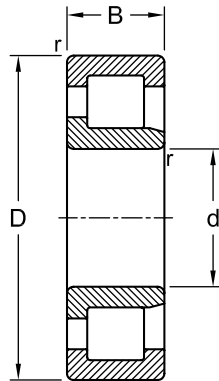
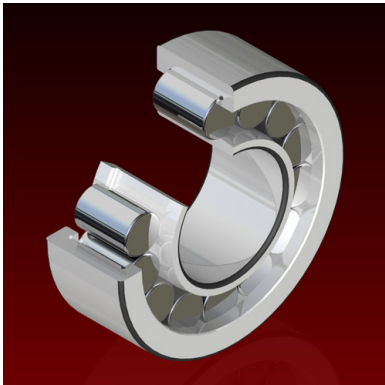
Dimensions				Load Rating		AEC Bearing	M	K
mm				kN				
d	D	B	r	Dynamic (C)	Static (C ₀)			
30	55	19	1.0	29.0	34.0	NN 3006	•	•
35	62	20	1.0	35.5	44.0	NN 3007	•	•
40	68	21	1.0	45.0	58.5	NN 3008	•	•
45	75	23	1.0	54.0	72.0	NN 3009	•	•
50	80	23	1.0	57.0	80.0	NN 3010	•	•
55	90	26	1.1	72.0	100.0	NN 3011	•	•
60	95	26	1.1	75.0	110.0	NN 3012	•	•
65	100	26	1.1	76.5	116.0	NN 3013	•	•
70	110	30	1.1	98.0	150.0	NN 3014	•	•
75	115	30	1.1	100.0	156.0	NN 3015	•	•
80	125	34	1.1	120.0	186.0	NN 3016	•	•
85	130	34	1.1	125.0	200.0	NN 3017	•	•
90	140	37	1.5	140.0	224.0	NN 3018	•	•
95	145	37	1.5	143.0	236.0	NN 3019	•	•
100	140	40	1.1	129.0	255.0	NNU 4920	•	•
	150	37	1.5	146.0	245.0	NN 3020	•	•
105	145	40	1.1	129.0	260.0	NNU 4921	•	•
	160	41	2.0	190.0	310.0	NN 3021	•	•
110	150	40	1.1	132.0	270.0	NNU 4922	•	•
	170	45	2.0	220.0	360.0	NN 3022	•	•
120	165	45	1.1	176.0	340.0	NNU 4924	•	•
	180	46	2.0	232.0	390.0	NN 3024	•	•
130	180	50	1.5	190.0	390.0	NNU 4926	•	•
	200	52	2.0	290.0	500.0	NN 3026	•	•
140	190	50	1.5	190.0	400.0	NNU 4928	•	•
	210	53	2.0	300.0	520.0	NN 3028	•	•

Dimensions				Load Rating		AEC Bearing	M	K
mm				kN				
d	D	B	r	Dynamic (C)	Static (C ₀)			
150	210	60	2.0	325.0	655.0	NU 4930	•	•
	225	56	2.1	335.0	585.0	NN 3030	•	•
160	220	60	2.0	335.0	680.0	NU 4932	•	•
	240	60	2.1	375.0	670.0	NN 3032	•	•
170	230	60	2.0	340.0	695.0	NU 4934	•	•
	260	67	2.1	450.0	800.0	NN 3034	•	•
180	250	69	2.0	405.0	850.0	NU 4936	•	•
	280	74	2.1	570.0	1000.0	NN 3036	•	•
190	260	69	2.0	405.0	880.0	NU 4938	•	•
	290	75	2.1	585.0	1040.0	NN 3038	•	•
200	280	80	2.1	490.0	1040.0	NU 4940	•	•
	310	82	2.1	655.0	1200.0	NN 3040	•	•
220	300	80	2.1	510.0	1140.0	NU 4944	•	•
	340	90	3.0	800.0	1460.0	NN 3044	•	•
240	320	80	2.1	530.0	1200.0	NU 4948	•	•
	360	92	3.0	850.0	1560.0	NN 3048	•	•
260	360	100	2.1	750.0	1700.0	NU 4952	•	•
	400	104	4.0	1060.0	2000.0	NN 3052	•	•
280	380	100	2.1	765.0	1800.0	NU 4956	•	•
	420	106	4.0	1080.0	2080.0	NN 3056	•	•
300	420	118	3.0	1040.0	2400.0	NU 4960	•	•
	460	118	4.0	1270.0	2400.0	NN 3060	•	•
320	440	118	3.0	1060.0	2550.0	NU 4964	•	•
	480	121	4.0	1320.0	2600.0	NN 3064	•	•
340	520	133	5.0	1630.0	3250.0	NN 3068	•	•
360	540	134	5.0	1660.0	3350.0	NN 3072	•	•
380	560	135	5.0	1700.0	3450.0	NN 3076	•	•
400	600	148	5.0	2160.0	4500.0	NN 3080	•	•
420	620	150	5.0	2120.0	4500.0	NN 3084	•	•
440	650	157	6.0	2450.0	5100.0	NN 3088	•	•
460	680	163	6.0	2600.0	5400.0	NN 3092	•	•
480	700	165	6.0	2700.0	5850.0	NN 3096	•	•
500	720	167	6.0	2650.0	5850.0	NN 30/500	•	•

Cylindrical Roller Bearings

Full Complement
Metric Series

NJG

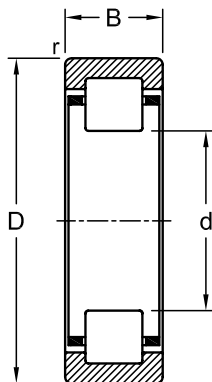


Dimensions				Load Rating		AEC Bearing
mm				kN		
d	D	B	r	Dynamic (C)	Static (C ₀)	
25	62	24	1.1	68.2	68.0	NJG 2305
30	72	27	1.1	84.2	86.5	NJG 2306
35	80	31	1.5	108.0	114.0	NJG 2307
40	90	33	1.5	145.0	156.0	NJG 2308
45	100	36	1.5	172.0	196.0	NJG 2309
50	110	40	2.0	198.0	220.0	NJG 2310
55	120	43	2.0	233.0	260.0	NJG 2311
65	140	48	2.1	303.0	360.0	NJG 2313
70	150	51	2.1	336.0	400.0	NJG 2314
75	160	55	2.1	396.0	480.0	NJG 2315
80	170	58	2.1	457.0	570.0	NJG 2316
85	180	60	3.0	484.0	620.0	NJG 2317
90	190	64	3.0	550.0	680.0	NJG 2318
100	215	73	3.0	704.0	900.0	NJG 2320
110	240	80	3.0	858.0	1060.0	NJG 2322
120	260	86	3.0	935.0	1200.0	NJG 2324
130	280	93	4.0	1080.0	1430.0	NJG 2326
140	300	102	4.0	1230.0	1660.0	NJG 2328
150	320	108	4.0	1450.0	1930.0	NJG 2330

Cylindrical Roller Bearings

Without Inner Ring
Metric Series

RNU

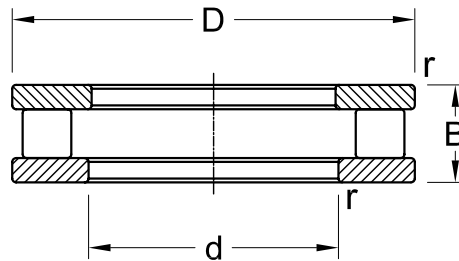
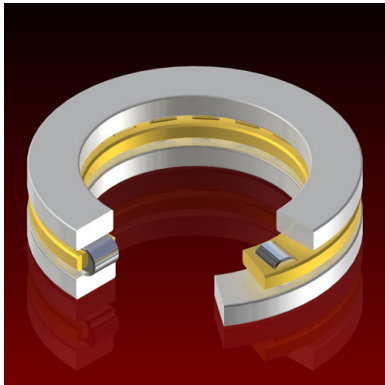


Dimensions				Load Rating		AEC Bearing	M
mm				kN			
d	D	B	r	Dynamic (C)	Static (C ₀)		
27.0	47	18	1.5	21.0	17.8	RNU 2204	
35.0	62	17	2.0	29.3	24.3	RNU 305	•
42.0	72	19	2.0	38.7	33.2	RNU 306	
46.2	80	31	2.5	61.5	58.1	RNU 2307	•
50.0	80	18	2.0	43.8	40.5	RNU 208	•
58.5	100	25	2.5	75.0	683.0	RNU 309	•
	100	36	2.5	102.0	101.0	RNU 2309	
64.5	120	29	2.0	106.0	102.0	RNU 409	
66.5	100	21	2.5	58.4	59.2	RNU 211	
79.6	120	23	2.5	79.9	83.2	RNU 213	
135.0	180	28	2.0	134.0	183.0	RNU 1024	•
169.0	250	42	4.0	325.0	396.0	RNU 228	•
27.0	47	18	1.5	21.0	17.8	RNU 2204	
35.0	62	17	2.0	29.3	24.3	RNU 305	•
42.0	72	19	2.0	38.7	33.2	RNU 306	
46.2	80	31	2.5	61.5	58.1	RNU 2307	•
50.0	80	18	2.0	43.8	40.5	RNU 208	•
58.5	100	25	2.5	75.0	683.0	RNU 309	•
	100	36	2.5	102.0	101.0	RNU 2309	
64.5	120	29	2.0	106.0	102.0	RNU 409	

Cylindrical Roller Bearings

Thrust
Metric Series

811, 812



Dimensions				Load Rating		AEC Bearing
mm				kN		
d	D	B	r	Dynamic (C)	Static (C ₀)	
15	28	9	0.3	11.2	27.0	81102
17	30	9	0.3	11.6	29.0	81103
20	35	10	0.3	17.6	44.0	81104
25	42	11	0.6	24.0	65.5	81105
30	47	11	0.6	24.5	69.5	81106
	52	16	0.6	50.0	134.0	81206
35	52	12	0.6	27.0	83.0	81107
	62	18	1.0	62.0	190.0	81207
40	60	13	0.6	38.0	118.0	81108
	68	19	1.0	83.0	255.0	81208
45	65	14	0.6	40.5	132.0	81109
	73	20	1.0	86.5	270.0	81209
50	70	14	0.6	42.5	146.0	81110
	78	22	1.0	91.5	300.0	81210
55	78	16	0.6	69.5	285.0	81111
	90	25	1.0	116.0	365.0	81211
60	85	17	1.0	80.0	300.0	81112
	95	26	1.0	137.0	465.0	81212
65	90	18	1.0	83.0	320.0	81113
	100	27	1.0	140.0	490.0	81213
70	95	18	1.0	86.5	345.0	81114
	105	27	1.0	146.0	530.0	81214
75	100	19	1.0	75.0	290.0	81115
	110	27	1.0	125.0	440.0	81215
80	105	19	1.0	76.5	300.0	81116
	115	28	1.0	160.0	610.0	81216
85	110	19	1.0	76.5	310.0	81117
	125	31	1.0	153.0	550.0	81217

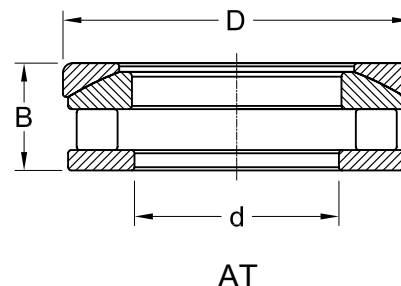
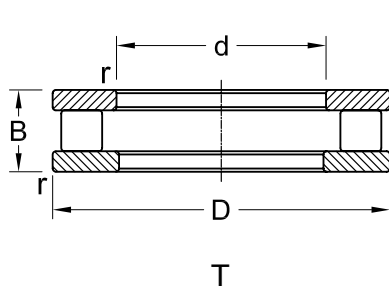
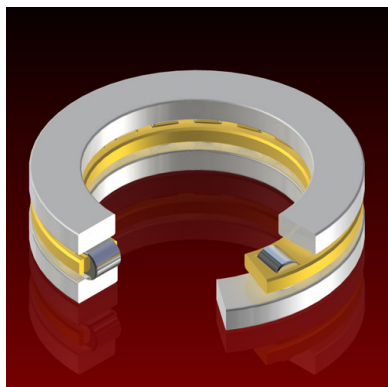
Dimensions				Load Rating		AEC Bearing
mm				kN		
d	D	B	r	Dynamic (C)	Static (C ₀)	
90	120	22	1.0	104.0	415.0	81118
	135	35	1.1	232.0	865.0	81218
100	135	25	1.0	146.0	585.0	81120
	150	38	1.1	224.0	830.0	81220
110	145	25	1.0	153.0	630.0	81122
	160	38	1.1	240.0	915.0	81222
120	155	25	1.0	160.0	680.0	81124
	170	39	1.1	245.0	965.0	81224
130	170	30	1.0	183.0	780.0	81126
	190	45	1.5	335.0	1250.0	81226
140	180	31	1.0	193.0	850.0	81128
	200	46	1.5	360.0	1400.0	81228
150	190	31	1.0	200.0	900.0	81130
	215	50	1.5	465.0	1900.0	81230
160	200	31	1.0	204.0	965.0	81132
	225	51	1.5	480.0	2000.0	81232
170	215	34	1.1	260.0	1180.0	81134
	240	55	1.5	540.0	2280.0	81234
180	225	34	1.1	270.0	1270.0	81136
	250	56	1.5	550.0	2400.0	81236
190	240	37	1.1	310.0	1460.0	81138
	270	62	2.0	695.0	2900.0	81238
200	250	37	1.1	310.0	1500.0	81140
	280	62	2.0	720.0	3100.0	81240
220	270	37	1.1	335.0	1700.0	81144
	300	63	2.0	750.0	3350.0	81244
240	300	45	1.5	475.0	2450.0	81148
	340	78	2.1	1100.0	4900.0	81248
260	320	45	1.5	490.0	2600.0	81152
	360	79	2.1	1140.0	5300.0	81252
280	350	53	1.5	680.0	3550.0	81156
	380	80	2.1	1160.0	5500.0	81256
300	380	62	2.0	850.0	4400.0	81160
	420	95	3.0	1530.0	7200.0	81260
320	400	63	2.0	880.0	4650.0	81164
	440	95	3.0	1560.0	7500.0	81264
340	420	64	2.0	900.0	4900.0	81168
	460	96	3.0	1630.0	8000.0	81268
360	440	65	2.0	915.0	5000.0	81172
	500	110	4.0	2160.0	10400.0	81272
380	460	65	2.0	930.0	5300.0	81176
	520	112	4.0	2200.0	10800.0	81276

Dimensions				Load Rating		AEC Bearing
mm				kN		
d	D	B	r	Dynamic (C)	Static (C ₀)	
400	480	65	2.0	965.0	5600.0	81180
	540	112	4.0	2240.0	11200.0	81280
420	500	65	2.0	980.0	5850.0	81184
	580	130	5.0	2850.0	14000.0	81284
440	540	80	2.1	1430.0	8000.0	81188
	600	130	5.0	2900.0	14600.0	81288
460	560	80	2.1	1460.0	8500.0	81192
	620	130	5.0	3000.0	15300.0	81292
480	580	80	2.1	1460.0	8650.0	81196
	650	135	5.0	3350.0	17000.0	81296
500	600	80	2.1	1530.0	9150.0	811/500
	670	135	5.0	3400.0	17600.0	812/500
530	640	85	3.0	1700.0	10400.0	811/530
	710	140	5.0	3800.0	20000.0	812/530
560	670	85	3.0	1760.0	10800.0	811/560
	750	150	5.0	3900.0	20800.0	812/560
600	710	85	3.0	1760.0	11200.0	811/600
	800	160	5.0	4400.0	24000.0	812/600
630	750	95	3.0	2160.0	13700.0	811/630

Cylindrical Roller Bearings

Thrust
Inch Series

T, AT



Dimensions				Load Rating		AEC Bearing
inch (mm)				kN		
d	D	B	r	Dynamic (C)	Static (C ₀)	
1.000	2.125	0.812	0.0315 (0.8)	44.5	38.1	T 601
	2.250	1.062	0.0315 (0.8)	44.5	38.1	AT 601
1.062	2.125	0.812	0.0315 (0.8)	44.5	38.1	T 602
	2.250	1.062	0.0315 (0.8)	44.5	38.1	AT 602
1.125	2.250	0.812	0.0315 (0.8)	51.2	52.1	T 603
	2.375	1.062	0.0315 (0.8)	51.2	52.1	AT 603
1.187	2.250	0.812	0.0315 (0.8)	51.2	52.1	T 604
	2.375	1.062	0.0315 (0.8)	51.2	52.1	AT 604
1.250	2.375	0.812	0.0315 (0.8)	56.5	57.8	T 605
	2.500	1.062	0.0315 (0.8)	56.5	57.8	AT 605
1.312	2.375	0.812	0.0315 (0.8)	56.5	57.8	T 606
	2.500	1.062	0.0315 (0.8)	56.5	57.8	AT 606
1.375	2.875	0.812	0.0315 (0.8)	69.4	96.1	T 607
	3.000	1.062	0.0315 (0.8)	69.4	96.1	AT 607
1.437	2.875	0.812	0.0315 (0.8)	69.4	96.1	T 608
	3.000	1.062	0.0315 (0.8)	69.4	96.1	AT 608
1.500	3.000	0.812	0.0315 (0.8)	75.2	105.0	T 609
	3.125	1.062	0.0315 (0.8)	75.2	105.0	AT 609
1.562	3.000	0.812	0.0315 (0.8)	75.2	105.0	T 610
	3.125	1.062	0.0315 (0.8)	75.2	105.0	AT 610
1.625	3.250	1.000	0.0630 (1.6)	109.0	136.0	T 611
	3.375	1.312	0.0630 (1.6)	109.0	136.0	AT 611
1.687	3.250	1.000	0.0630 (1.6)	109.0	136.0	T 612
	3.375	1.312	0.0630 (1.6)	109.0	136.0	AT 612
1.750	3.375	1.000	0.0630 (1.6)	118.5	150.0	T 613
	3.500	1.312	0.0630 (1.6)	118.5	150.0	AT 613
1.812	3.375	1.000	0.0630 (1.6)	118.5	150.0	T 614
	3.500	1.312	0.0630 (1.6)	118.5	150.0	AT 614
1.875	3.500	1.000	0.0630 (1.6)	118.5	150.0	T 615
	3.625	1.312	0.0630 (1.6)	118.5	150.0	AT 615
1.937	3.500	1.000	0.0630 (1.6)	118.5	150.0	T 616
	3.625	1.312	0.0630 (1.6)	118.5	150.0	AT 616