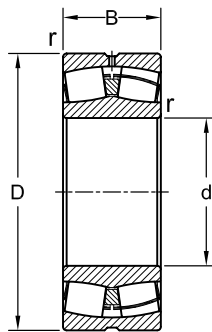


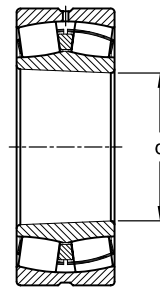
Spherical Roller Bearings

Radial
Metric Series

21, 22, 23, 24



Cylindrical bore



Tapered bore

Dimensions				Load Rating		AEC Bearing	K12	K30	M
mm				kN					
d	D	B	r	Dynamic (C)	Static (C ₀)				
20	52	15	1.1	30.5	30.5	21304 CC/W33	•		
25	52	18	1.0	35.7	35.7	22205 CC/W33	•		
	62	17	1.1	41.4	41.5	21305 CC/W33	•		
30	62	20	1.0	48.9	52.0	22206 CC/W33	•		
	72	19	1.1	55.2	61.0	21306 CC/W33	•		
35	72	23	1.1	67.3	73.5	22207 CC/W33	•		
	80	21	1.5	65.6	72.0	21307 CC/W33	•		
	80	31	1.5	89.4	165.4	22307 CC/W33	•		•
40	80	23	1.1	73.6	81.5	22208 CC/W33	•		
	90	23	1.5	82.8	98.0	21308 CC/W33	•		
	90	33	1.5	115.0	122.0	22308 CC/W33	•		•
45	85	23	1.1	77.1	88.0	22209 CC/W33	•		
	100	25	1.5	101.0	114.0	21309 CC/W33	•		
	100	36	1.5	138.0	160.0	22309 CC/W33	•		
50	90	23	1.1	84.5	100.0	22210 CC/W33	•		
	110	27	2.0	120.0	140.0	21310 CC/W33	•		
55	110	40	2.0	176.0	200.0	22310 CC/W33	•		
	100	25	1.5	99.5	118.0	22211 CC/W33	•		
60	120	29	2.0	138.0	163.0	21311 CC/W33	•		
	120	43	2.0	199.0	232.0	22311 CC W33	•		
	110	28	1.5	122.0	146.0	22212 CC/W33	•		
65	130	31	2.1	161.0	200.0	21312 CC/W33	•		
	130	46	2.1	235.0	280.0	22312 CC/W33	•		
	120	31	1.5	148.0	183.0	22213 CC/W33	•		
70	140	33	2.1	184.0	240.0	21313 CC/W33	•		
	140	48	2.1	253.0	300.0	22313 CC/W33	•		
75	125	31	1.5	148.0	186.0	22214 CC/W33	•		
	150	35	2.1	207.0	260.0	21314 CC/W33	•		
	150	51	2.1	311.0	380.0	22314 CC/W33	•		
75	130	31	1.5	158.0	208.0	22215 CC/W33	•		
	160	37	2.1	235.0	300.0	21315 CC/W33	•		•
	160	55	2.1	345.0	430.0	22315 CC/W33	•		

Dimensions				Load Rating		AEC Bearing	K12	K30	M
mm				kN					
d	D	B	r	Dynamic (C)	Static (C ₀)				
80	140	33	2.0	176.0	228.0	22216 CC/W33	•		
	170	39	2.1	258.0	335.0	21316 CC W33	•		•
	170	58	2.1	374.0	455.0	22316 CC/W33	•		
85	150	36	2.0	210.0	270.0	22217 CC/W33	•		
	180	41	3.0	293.0	375.0	21317 CC/W33	•		
	180	60	3.0	420.0	520.0	22317 CC/W33	•		
90	160	40	2.0	253.0	340.0	22218 CC/W33	•		
	160	52	2.0	311.0	440.0	23218 CC/W33	•		
	190	43	3.0	322.0	425.0	21318 CC/W33	•		
	190	64	3.0	477.0	610.0	22318 CC/W33	•		
95	170	43	2.1	282.0	375.0	22219 CC/W33	•		
	200	45	3.0	351.0	480.0	21319 CC/W33	•		
	200	67	3.0	518.0	670.0	22319 CC/W33	•		
100	165	52	2.0	322.0	490.0	23120 CC/W33	•		•
	180	46	2.1	311.0	415.0	22220 CC/W33	•		
	180	60	2.1	414.0	600.0	23220 CC/W33	•		
	215	47	3.0	385.0	530.0	21320 CC/W33	•		
	215	73	3.0	610.0	800.0	22320 CC/W33	•		•
110	170	45	2.0	267.0	440.0	23022 CC/W33	•		
	180	56	2.0	374.0	585.0	23122 CC/W33	•		
	180	69	2.0	460.0	750.0	24122 CC/W33			
	200	53	2.1	408.0	560.0	22222 CC/W33	•		
	200	70	2.1	518.0	765.0	23222 CC/W33	•		
	240	50	3.0	460.0	630.0	21322 CC/W33	•		
	240	80	3.0	725.0	965.0	22322 CC/W33	•		
120	180	46	2.0	305.0	510.0	23024 CC/W33	•		
	180	60	2.0	374.0	670.0	24024 CC/W33		•	•
	200	62	2.0	449.0	695.0	23124 CC/W33	•		
	200	80	2.0	575.0	950.0	24124 CC/W33		•	
	215	58	2.1	466.0	670.0	22224 CC/W33	•		
	215	76	2.1	610.0	930.0	23224 CC/W33	•		
	260	86	3.0	845.0	1120.0	22324 CC/W33	•		
130	200	52	2.0	374.0	610.0	23026 CC/W33	•		
	200	69	2.0	477.0	815.0	24026 CC/W33		•	•
	210	64	2.0	489.0	780.0	23126 CC/W33	•		
	210	80	2.0	587.0	1000.0	24126 CC/W33		•	
	230	64	3.0	546.0	800.0	22226 CC/W33	•		
	230	80	3.0	690.0	1060.0	23226 CC/W33	•		•
	280	93	4.0	978.0	1320.0	22326 CC/W33	•		•
140	210	53	2.0	397.0	680.0	23028 CC/W33	•		
	210	69	2.0	495.0	900.0	24028 CC/W33		•	•
	225	68	2.1	546.0	900.0	23128 CC/W33	•		
	225	85	2.1	673.0	1160.0	24128 CC/W33		•	
	250	68	3.0	610.0	900.0	22228 CC/W33	•		
	250	88	3.0	799.0	1250.0	23228 CC/W33	•		•
	300	102	4.0	1130.0	1560.0	22328 CC/W33	•		
150	225	56	2.1	437.0	750.0	23030 CC/W33	•		
	225	75	2.1	564.0	1040.0	24030 CC/W33		•	•

Dimensions				Load Rating		AEC Bearing	K12	K30	M
mm				kN					
d	D	B	r	Dynamic (C)	Static (C ₀)				
160	250	80	2.1	725.0	1200.0	23130 CC/W33	•		
	250	100	2.1	897.0	1530.0	24130 CC/W33		•	
	270	73	3.0	736.0	1080.0	22230 CC/W33	•		
	270	96	3.0	937.0	1460.0	23230 CC/W33	•		
	320	108	4.0	1270.0	1760.0	22330 CC/W33	•		•
	240	60	2.1	506.0	880.0	23032 CC/W33	•		
	240	80	2.1	656.0	1200.0	24032 CC/W33		•	•
	270	86	2.1	845.0	1370.0	23132 CC/W33	•		
	270	109	2.1	1040.0	1760.0	24132 CC/W33		•	
	290	80	3.0	863.0	1290.0	22232 CC/W33	•		
170	290	104	3.0	1070.0	1660.0	23232 CC/W33	•		
	340	114	4.0	1380.0	1960.0	22332 CC/W33	•		•
	260	67	2.1	621.0	1060.0	23034 CC/W33	•		
	260	90	2.1	799.0	1460.0	24034 CC/W33		•	•
	280	88	2.1	897.0	1500.0	23134 CC/W33	•		
	280	109	2.1	1070.0	1860.0	24134 CC/W33		•	
	310	86	4.0	978.0	1460.0	22234 CC/W33	•		•
	310	110	4.0	1220.0	1930.0	23234 CC/W33	•		
	360	120	4.0	1540.0	2160.0	22334 CC/W33	•		•
	250	52	2.0	431.0	830.0	23936 CC/W33	•		•
180	280	74	2.1	725.0	1250.0	23036 CC/W33	•		
	280	100	2.1	937.0	1730.0	24036 CC/W33		•	•
	300	96	3.0	1050.0	1760.0	23136 CC/W33	•		
	300	118	3.0	1220.0	2160.0	24136 CC/W33		•	
	320	86	4.0	1010.0	1560.0	22236 CC/W33	•		•
	320	112	4.0	1290.0	2120.0	23236 CC/W33	•		•
	380	126	4.0	1730.0	2450.0	22336 CC/W33	•		•
	260	52	2.0	414.0	800.0	23938 CC/W33	•		•
	290	75	2.1	753.0	1340.0	23038 CC/W33	•		•
	290	100	2.1	978.0	1800.0	24038 CC/W33		•	•
190	320	104	3.0	1200.0	2080.0	23138 CC/W33	•		•
	320	128	3.0	1400.0	2500.0	24138 CC/W33		•	•
	340	92	4.0	1110.0	1700.0	22238 CC/W33	•		•
	340	120	4.0	1460.0	2400.0	23238 CC/W33	•		•
	400	132	5.0	1870.0	2650.0	22338 CC/W33	•		•
	280	60	2.1	546.0	1040.0	23940 CC/W33	•		•
	310	82	2.1	880.0	1530.0	23040 CC/W33	•		•
	310	109	2.1	1130.0	2120.0	24040 CC/W33		•	•
	340	112	3.0	1380.0	2360.0	23140 CC/W33	•		•
	340	140	3.0	1580.0	2800.0	24140 CC/W33		•	•
200	360	98	4.0	1270.0	1930.0	22240 CC/W33	•		•
	360	128	4.0	1610.0	2700.0	23240 CC/W33	•		•
	420	138	5.0	2020.0	2900.0	22340 CC/W33	•		•
	300	60	2.1	546.0	1080.0	23944 CC/W33	•		•
	340	90	3.0	1050.0	1860.0	23044 CC/W33	•		•
	340	118	3.0	1360.0	2600.0	24044 CC/W33		•	•
	370	120	4.0	1580.0	2750.0	23144 CC/W33	•		•
	370	150	4.0	1840.0	3350.0	24144 CC/W33		•	•

Dimensions				Load Rating		AEC Bearing	K12	K30	M
mm				kN					
d	D	B	r	Dynamic (C)	Static (C ₀)				
240	400	108	4.0	1520.0	2360.0	22244 CC/W33	•		•
	400	144	4.0	2070.0	3450.0	23244 CC/W33	•		•
	460	145	5.0	2350.0	3450.0	22344 CC/W33	•		•
	320	60	2.1	564.0	1160.0	23948 CC/W33	•		•
	360	92	3.0	1130.0	2080.0	23048 CC/W33	•		•
	360	118	3.0	1380.0	2700.0	24048 CC/W33		•	•
	400	128	4.0	1790.0	3200.0	23148 CC/W33	•		•
	400	160	4.0	2100.0	3900.0	24148 CC/W33		•	•
	440	120	4.0	1910.0	3000.0	22248 CC/W33	•		•
260	440	160	4.0	2530.0	4300.0	23248 CC/W33	•		•
	500	155	5.0	2670.0	4000.0	22348 CC/W33	•		•
	360	75	2.1	880.0	1800.0	23952 CC/W33	•		•
	400	104	4.0	1400.0	2550.0	23052 CC/W33	•		•
	400	140	4.0	1760.0	3450.0	24052 CC/W33		•	•
	440	144	4.0	2220.0	3900.0	23152 CC/W33	•		•
	440	180	4.0	2620.0	4800.0	24152 CC/W33		•	•
	480	130	5.0	2300.0	3550.0	22252 CAC/W33	•		•
	480	174	5.0	2820.0	4750.0	23252 CAC/W33	•		•
280	540	165	6.0	3050.0	4550.0	22352 CC/W33	•		•
	380	75	2.1	845.0	1760.0	23956 CC/W33	•		•
	420	106	4.0	1520.0	2850.0	23056 CC/W33	•		•
	420	140	4.0	1870.0	3800.0	24056 CC/W33		•	•
	460	146	5.0	2300.0	4250.0	23156 CC/W33	•		•
	460	180	5.0	2670.0	5100.0	24156 CC/W33		•	•
	500	130	5.0	2350.0	3750.0	22256 CAC/W33	•		•
	500	176	5.0	2820.0	4900.0	23256 CAC/W33	•		•
	580	175	6.0	3450.0	5200.0	22356 CC/W33	•		•
300	420	90	3.0	1200.0	2500.0	23960 CC/W33	•		•
	460	118	4.0	1840.0	3450.0	23060 CC/W33	•		•
	460	160	4.0	2350.0	4750.0	24060 CC/W33		•	•
	500	160	5.0	2820.0	5100.0	23160 CC/W33	•		•
300	500	200	5.0	3280.0	6300.0	24160 CC/W33		•	•
	540	140	5.0	2760.0	4250.0	22260 CAC/W33	•		•
	540	192	5.0	3340.0	5850.0	23260 CAC/W33	•		•
320	440	90	3.0	1240.0	2700.0	23964 CAC/W33	•		•
	480	121	4.0	1960.0	3800.0	23064 CC/W33	•		•
	480	160	4.0	2480.0	5100.0	24064 CC/W33		•	•
	540	176	5.0	3280.0	6000.0	23164 CC/W33	•		•
340	540	218	5.0	3740.0	7100.0	24164 CC/W33		•	•
	580	150	5.0	3160.0	4900.0	22264 CAC/W33	•		•
	580	208	5.0	3850.0	6700.0	23264 CAC/W33	•		•
	460	90	3.0	1270.0	2800.0	23968 CC/W33	•		•
	520	133	5.0	2350.0	4550.0	23068 CC/W33	•		•
	520	180	5.0	2990.0	6200.0	24068 CC/W33		•	•
	580	190	5.0	3680.0	6800.0	23168 CC/W33	•		•
	580	243	5.0	4660.0	8650.0	24168 CAC/W33		•	•
360	620	224	6.0	4660.0	8300.0	23268 CC/W33	•		•
	480	90	3.0	1290.0	2900.0	23972 CAC/W33	•		•

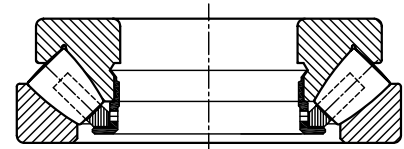
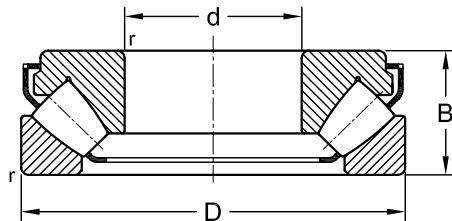
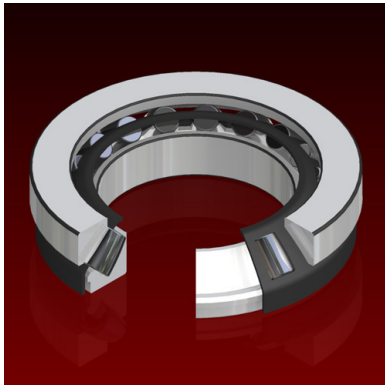
Dimensions				Load Rating		AEC Bearing	K12	K30	M
mm				kN					
d	D	B	r	Dynamic (C)	Static (C ₀)				
380	540	134	5.0	2390.0	4800.0	23072 CC/W33	•		•
	540	180	5.0	3110.0	6550.0	24072 CC/W33		•	•
	600	192	5.0	3740.0	6950.0	23172 CAC/W33	•		•
	600	243	5.0	4490.0	8650.0	24172 CC/W33		•	•
	650	232	6.0	4660.0	8300.0	23272 CA/W33	•		•
	520	106	4.0	1730.0	3800.0	23976 CC/W33	•		•
	560	135	5.0	2480.0	5000.0	23076 CC/W33	•		•
	560	180	5.0	3160.0	6800.0	24076 CC/W33		•	•
	620	194	5.0	3740.0	7100.0	23176 CA/W33	•		•
	620	243	5.0	4600.0	9150.0	24176 CA/W33		•	•
400	680	240	6.0	5060.0	9150.0	23276 CA/W33	•		•
	540	106	4.0	1730.0	3900.0	23980 CAC/W33	•		•
	600	148	5.0	2880.0	5700.0	23080 CAC/W33	•		•
	600	200	5.0	3620.0	7800.0	24080 CAC/W33		•	•
	650	200	6.0	4080.0	7650.0	23180 CA/W33	•		•
	650	250	6.0	4890.0	9800.0	24180 CA/W33		•	•
	720	256	6.0	5750.0	10400.0	23280 CA/W33	•		•
	560	106	4.0	1760.0	4150.0	23984 CAC/W33	•		•
	620	150	5.0	2990.0	6000.0	23084 CA/W33	•		•
	620	200	5.0	3740.0	8150.0	24084 CA/W33		•	•
420	700	224	6.0	4890.0	9300.0	23184 CA/W33	•		•
	700	280	6.0	5750.0	11400.0	24184 CA/W33		•	•
	760	272	7.5	6330.0	11600.0	23284 CA/W33	•		•
	600	118	4.0	2100.0	4900.0	23988 CAC/W33	•		•
	650	157	6.0	3220.0	6550.0	23088 CA/W33	•		•
	650	212	6.0	4080.0	8800.0	24088 CA/W33		•	•
	720	226	6.0	5180.0	10000.0	23188 CA/W33	•		•
	720	280	6.0	5980.0	12200.0	24188 CA/W33		•	•
	790	280	7.5	6730.0	12500.0	23288 CA/W33	•		•
	620	118	4.0	2190.0	5000.0	23992 CA/W33	•		•
440	680	163	6.0	3450.0	6950.0	23092 CA/W33	•		•
	680	218	6.0	4370.0	9500.0	24092 CA/W33		•	•
	760	240	7.5	5640.0	10800.0	23192 CA/W33	•		•
	760	300	7.5	7250.0	14600.0	24192 CA/W33		•	•
	830	296	7.5	7360.0	13700.0	23292 CA/W33	•		•
	650	128	5.0	2530.0	5700.0	23996 CA/W33	•		•
	700	165	6.0	3340.0	6800.0	23096 CA/W33	•		•
	700	218	6.0	4490.0	10000.0	24096 CA/W33		•	•
	790	248	7.5	6100.0	12000.0	23196 CA/W33	•		•
	790	308	7.5	7250.0	15000.0	24196 CA/W33		•	•
460	870	310	7.5	8170.0	15000.0	23296 CA/W33	•		•
	670	128	5.0	2530.0	6000.0	239/500 CA/W33	•		•
	720	167	6.0	3680.0	7800.0	230/500 CA/W33	•		•
	720	218	6.0	4600.0	10400.0	240/500 CA/W33		•	•
	830	264	7.5	6730.0	12900.0	231/500 CA/W33	•		•
	830	325	7.5	8630.0	17000.0	241/500 CA/W33		•	•
	920	336	7.5	9780.0	18300.0	232/500 CA/W33	•		•
	710	136	5.0	2820.0	6700.0	239/530 CA/W33	•		•

Dimensions				Load Rating		AEC Bearing	K12	K30	M
mm				kN					
d	D	B	r	Dynamic (C)	Static (C ₀)				
	780	185	6.0	4370.0	9300.0	230/530 CA/W33	•		•
	780	250	6.0	5640.0	12700.0	240/530 CA/W33		•	•
	870	272	7.5	7130.0	14000.0	231/530 CA/W33	•		•
	870	335	7.5	9200.0	19000.0	241/530 CA/W33		•	•
	980	335	9.5	11100.0	20400.0	232/530 CA/W33	•		•

Spherical Roller Bearings

Thrust
Metric Series

29



Dimensions				Load Rating		AEC Bearing	M
mm				kN			
d	D	B	r	Dynamic (C)	Static (C ₀)		
60	130	42	1.5	345.0	915.0	29412 E	•
65	140	45	2.0	397.0	1080.0	29413 E	•
70	150	48	2.0	449.0	1250.0	29414 E	•
75	160	51	2.0	518.0	1430.0	29415 E	•
80	170	54	2.1	575.0	1630.0	29416 E	•
85	150	39	1.5	334.0	1060.0	29317 E	•
	180	58	2.1	633.0	1800.0	29417 E	•
90	155	39	1.5	345.0	1080.0	29318 E	•
	190	60	2.1	702.0	2000.0	29418 E	•
100	170	42	1.5	408.0	1290.0	29320 E	•
	210	67	3.0	863.0	2500.0	29420 E	•
110	190	48	2.0	535.0	1730.0	29322 E	•
	230	73	3.0	1010.0	3000.0	29422 E	•
120	210	54	2.1	656.0	2120.0	29324 E	•
	250	78	4.0	1170.0	3450.0	29424 E	•
130	225	58	2.1	753.0	2500.0	29326 E	•
	270	85	4.0	1380.0	4050.0	29426 E	•
140	240	60	2.1	845.0	2850.0	29328 E	•
	280	85	4.0	1400.0	4300.0	29428 E	•
150	215	39	1.5	345.0	1370.0	29230	•
	250	60	2.1	863.0	2850.0	29330 E	•
	300	90	4.0	1610.0	5100.0	29430 E	•
160	225	39	1.5	357.0	1460.0	29232	•
	270	67	3.0	1010.0	3450.0	29332 E	•
	320	95	5.0	1790.0	5600.0	29432 E	•
170	240	42	1.5	408.0	1660.0	29234	•
	280	67	3.0	1050.0	3550.0	29334 E	•
	340	103	5.0	2020.0	6550.0	29434 E	•
180	250	42	1.5	420.0	1760.0	29236	•
	300	73	3.0	1240.0	4300.0	29336 E	•
	360	109	5.0	2250.0	7350.0	29436 E	•
190	270	48	2.0	518.0	2200.0	29238 E	•